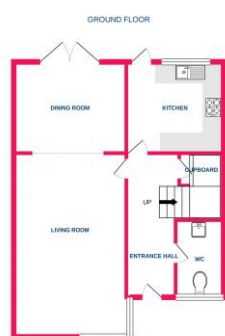




Plot 35 is a **THREE** bedroom terrace house positioned on a nice plot with a south-east facing rear garden being secluded to the rear. The accommodation flows well and is finished with a stylish Cappuccino Kitchen and modern bathroom. The ground floor benefits from an inviting entrance hall, cloakroom/WC and two separate reception rooms. The bedrooms are an impressive size with the smallest measuring 10'8 max x 8'9'. It is unusual to find a brand new home on such a good-sized plot with seclusion to the rear offering the sizes of the bedrooms that this plot does.

Price £380,000



Whilst every attempt has been made to ensure the accuracy of the floorplan contained herein, measurements of all plots, boundaries, aspects and other items are approximate and no responsibility is taken for any error, omission or misstatement. This plan is for illustrative purposes only and should be used as such for any prospective purchaser. The various systems and appliances shown here are their make and no guarantee as to their operability or efficiency can be given.
Drawn with reference 12/2021

- Alarm System
- Ten Year NHBC
- Solid Internal Walls
- Double Glazed
- Entrance Hal
- Ground Floor WC
- Turfed Rear Garden
- Vaillant Combi Boiler
- Kitchen (10'7 x 8'7) (13'7 x 10'5)
- Lounge (16'5 x 10'4)
- Dining Room (10'4 x 9'2)
- Bedroom 1 (13'7 x 10'5)
- Bedroom 2 (10'5 x 7'9)
- Bedroom 3 (10'8>7'6 x 8'9)
- Two Parking Spaces

