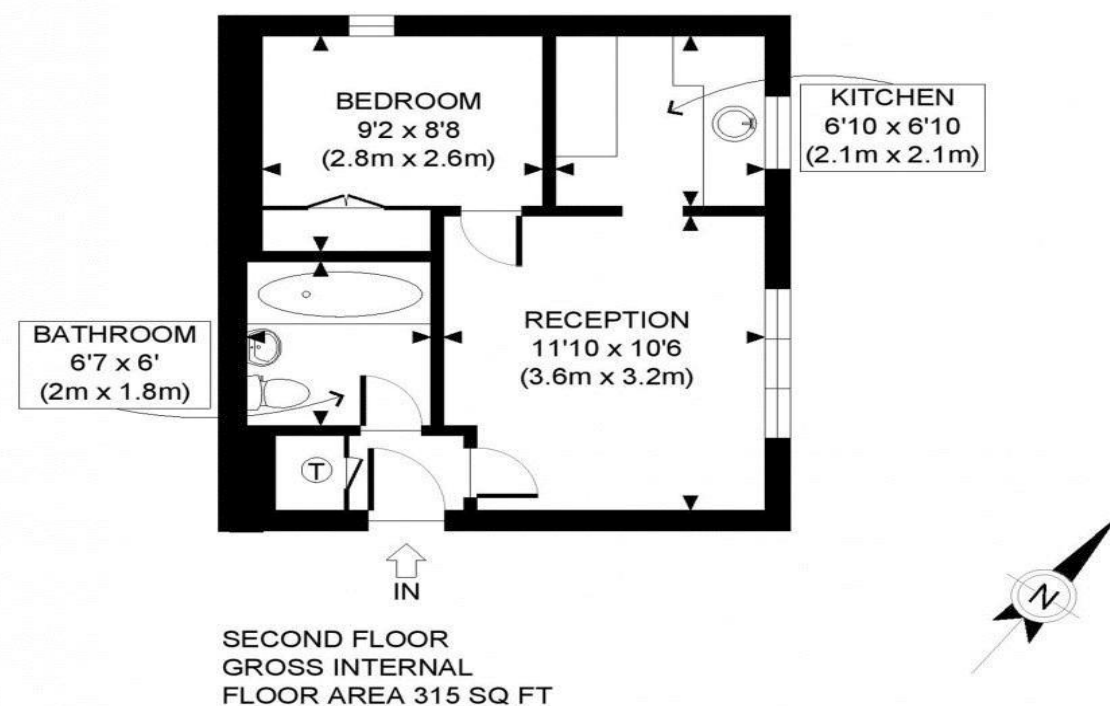


the floorplan...



APPROX. GROSS INTERNAL FLOOR AREA: 315 SQ FT/ 29 SQM

more details from...

call: **Brian Cox Greenford: 0208 578 1004**

email: emma.gerald@brian-cox.co.uk

web: www.brian-cox.co.uk



0208 578 1004
brian-cox.co.uk



ONE BEDROOM - SECOND FLOOR - NO CHAIN - VIEW NOW. Brian Cox and Company are delighted to bring to the market this one-bedroom purpose built second floor apartment. The property would suit buy to let investors as well as first time buyers. The property has a good-sized lounge, a fitted kitchen, a modern bathroom and one bedroom. Further benefits include parking, double glazing, security entry phone system, electric heating and is being offered with no onward chain.



£185,000
Leasehold

Chartwell Close, Greenford UB6 8LP

Consumer Protection from Unfair Trading Regulations 2008 We have not tested any apparatus, equipment, fixtures, fittings or services and so cannot verify that they are in working order or fit for purpose. You are advised to obtain verification from your solicitor or surveyor. References to the tenure of a property are based on information supplied by the seller. We have not had sight of the title documents and a buyer is advised to obtain verification from their solicitor. Items shown in photographs are not included unless specifically mentioned within the sales particulars, but may be available by separate negotiation. We advise you to book an appointment to view before embarking on any journey to see a property, and check its availability.



in brief...

- One Bedroom
- Second Floor Apartment
- Purpose Built
- Parking
- Double Glazing
- Electric Throughout



the location...

nearest stations ...

Greenford (0.5 miles)
Northolt (0.7 miles)
South Greenford (1.0 miles)



Greenford is a large suburb in the London Borough of Ealing in West London, UK. It was an ancient parish in the historic county of Middlesex. It is 11 miles (18 km) from Charing Cross in Central London.

There are several local primary schools in the area which include Oldfield Primary School, Coston Primary School, Edward Betham Church of England Primary School, Ravenor Primary School.

If you have older children there are also local secondary schools nearby some of these include William Perkin Church of England High School, Belvue School and Greenford High School.

