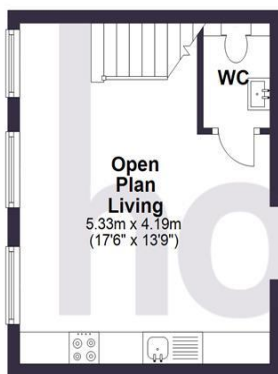
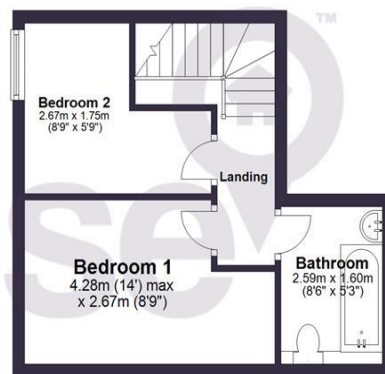




Ground Floor



First Floor



Floor Plan measurements are approximate and are for illustrative purposes only.
Plan produced using PlanUp.

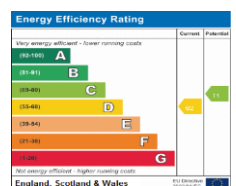


MONEY LAUNDERING REGULATIONS 2007

Intending purchasers will be asked to produce identification and proof of financial status when an offer is received. We would ask for your co-operation in order that there will be no delay in agreeing the sale.

THE PROPERTY MISDESCRIPTIONS ACT 1991

House has not tested any apparatus, equipment, fixtures and fittings or services and so cannot verify that they are in working order or fit for the purpose. A Buyer is advised to obtain verification from their Solicitor or Surveyor. References to the Tenure of a Property are based on information supplied by the Seller. House has not had sight of the title documents. A Buyer is advised to obtain verification from their Solicitor. You are advised to check the availability of this property before travelling any distance to view. We have taken every precaution to ensure that these details are accurate and not misleading. If there is any point which is of particular importance to you, please contact us and we will provide any information you require. This is advisable, particularly if you intend to travel some distance to view the property. The mention of any appliances and services within these details does not imply that they are in full and efficient working order. These particulars are in draft form awaiting Vendors confirmation of their accuracy. These details must therefore be taken as a guide only and approved details should be requested from the agents.



Sheppey Court, Halfway, ME12 3AS



- ✓ Stylish 2 Bedroom Duplex in Sheppey Court
- ✓ Crafted and Refurbished from the original Banks House
- ✓ Modern Two Tone Fitted Kitchen
- ✓ Downstairs WC & Upstairs Bathroom
- ✓ Allocated Parking Space
- ✓ Ideal First Home or Investment
- ✓ EPC: D | Council Tax: To be assessed

Take a look at this gorgeous 2 bedroom duplex in the stunning Sheppey Court Development in Halfway.

This home has large sash windows, allocated parking, and an open plan entertaining area.

This property is perfect for an investor or first time buyer looking to make a smart investment into a historic building on the Island.

You'll be the envy of the neighbourhood with this truly wonderful home.

Come and take a look today and see what it has to offer!

Our friendly team will be more than happy to arrange a viewing for you.



house

To arrange a viewing...

Call: 01795 385810

Visit: www.houseagent.co

Email: hello@houseagent.co

O.I.E.O £200,000

Leasehold