







3 Albany Place Egham, Surrey, TW20 9HG

£549,950



- 4 Bedrooms
- Detached Georgian Style
- Large Lounge/ Diner
- Downstairs Cloakroom
- Modern Bathroom
- Double Garage

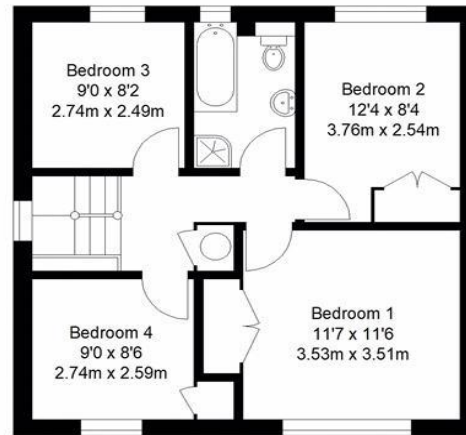
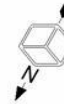
Located in a convenient location is this 4 bedroom Georgian style detached family home offering good sized accommodation. The property comprises of 4 bedrooms which all would take a double bed, large lounge/ diner, kitchen, modern bathroom ,downstairs cloakroom and a study. To the rear is a pretty enclosed garden with the added benefit of access to a double garage.

Epc Rating: D

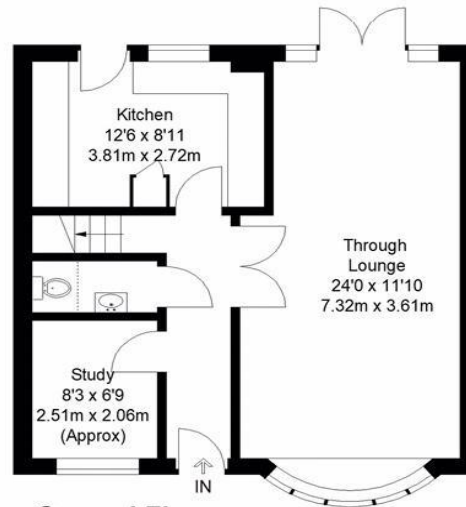
Council Tax band: E

Albany Place, Egham


Approximate Gross Internal Area
Ground Floor = 573 sq ft / 53.2 sq m
First Floor = 554 sq ft / 51.5 sq m
Total = 1127 sq ft / 104.7 sq m



First Floor



Ground Floor

 = Reduced headroom
below 1.5 m / 5'0"

Cube Property Marketing © 2018
Illustration for identification purposes only,
measurements are approximate, not to scale.