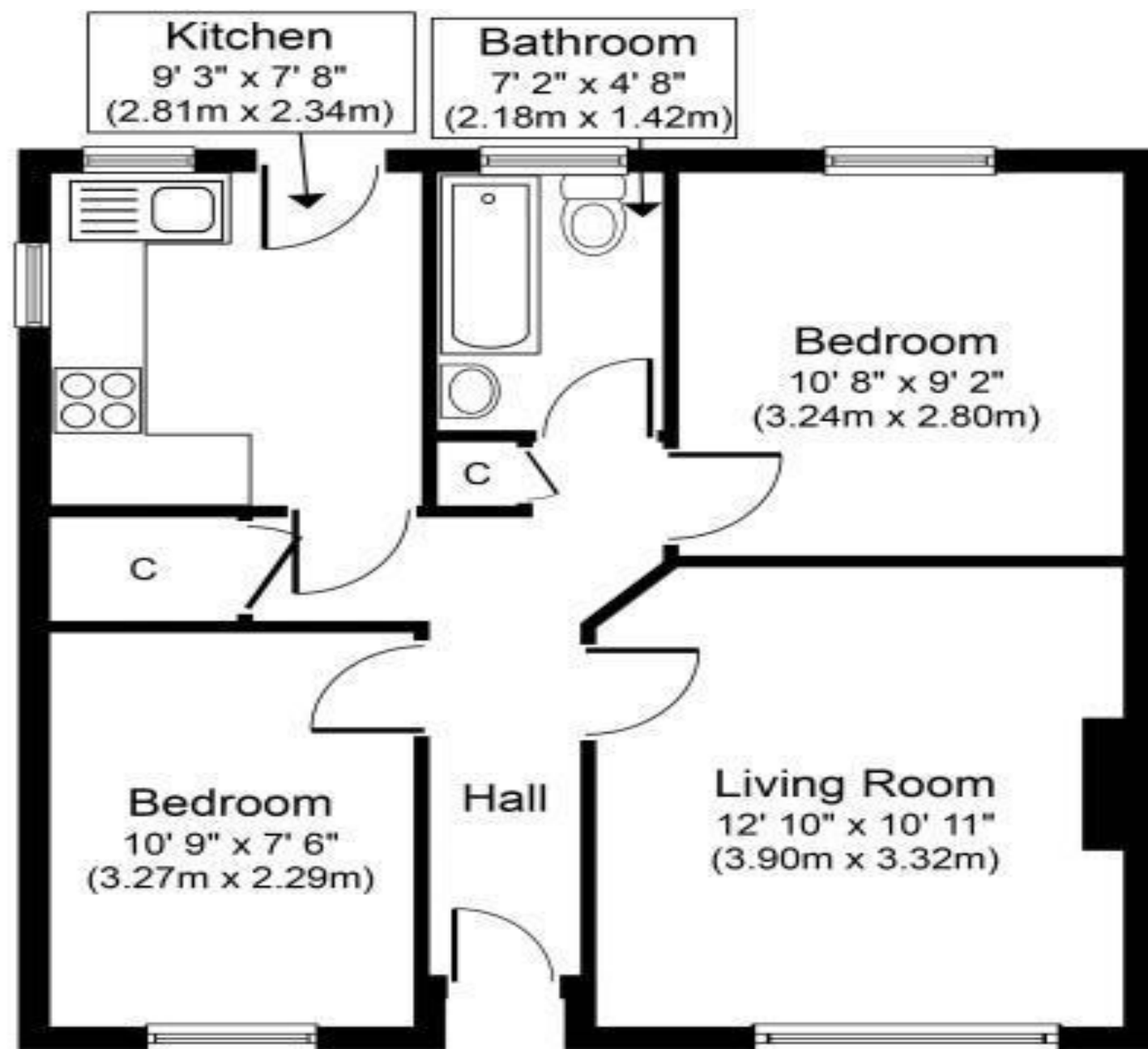


the floorplan...



Ground Floor
Approximate Floor Area
517 sq. ft.
(48.0 sq. m.)

more details from...

call: Brian Cox North Greenford: 0208 578 1004
email: daniel.jed@brian-cox.co.uk
web: www.brian-cox.co.uk



0208 578 1004
brian-cox.co.uk



TWO DOUBLE BEDROOM - GROUND FLOOR MAISONETTE - LONG LEASE - WELL MAINTAINED - RESIDENTIAL LOCATION. Brian Cox and Company are proud to offer to the market this first floor two double bedroom maisonette. The property briefly benefits from two good sized bedrooms, family bathroom, modern fitted kitchen, lounge and its own rear garden. Viewings are by appointment only so call now to avoid disappointment!!



£315,000
Leasehold

Greenway Gardens, Greenford UB6 9TT



in brief...

- Long Lease
- Two Bedrooms
- Private Rear Garden
- Ground Floor
- Ravenor Primary School Catchment
- Numerous Transport Links



the location...

nearest stations ...

Greenford (1.0 miles)
Northolt (1.0 miles)
South Greenford (1.2 miles)

Greenford is a large suburb in the London Borough of Ealing in West London, UK. It was an ancient parish in the historic county of Middlesex. It is 11 miles (18 km) from Charing Cross in Central London.

There are several local primary schools in the area which include Ravenor Primary School, Gifford Primary School, Stanhope Primary School and Coston Primary School.

If you have older children there are also local secondary schools some of these include Greenford High School, The Cardinal Wiseman Catholic School and William Perkin Church of England High School.