



TRACY PHILLIPS

Estates

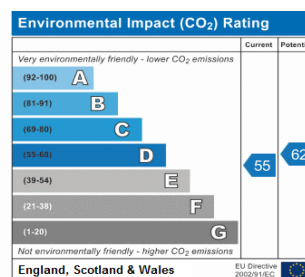
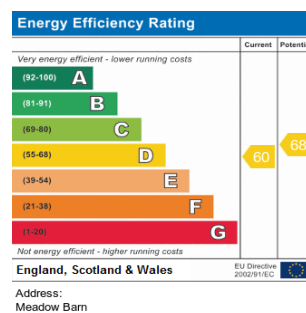
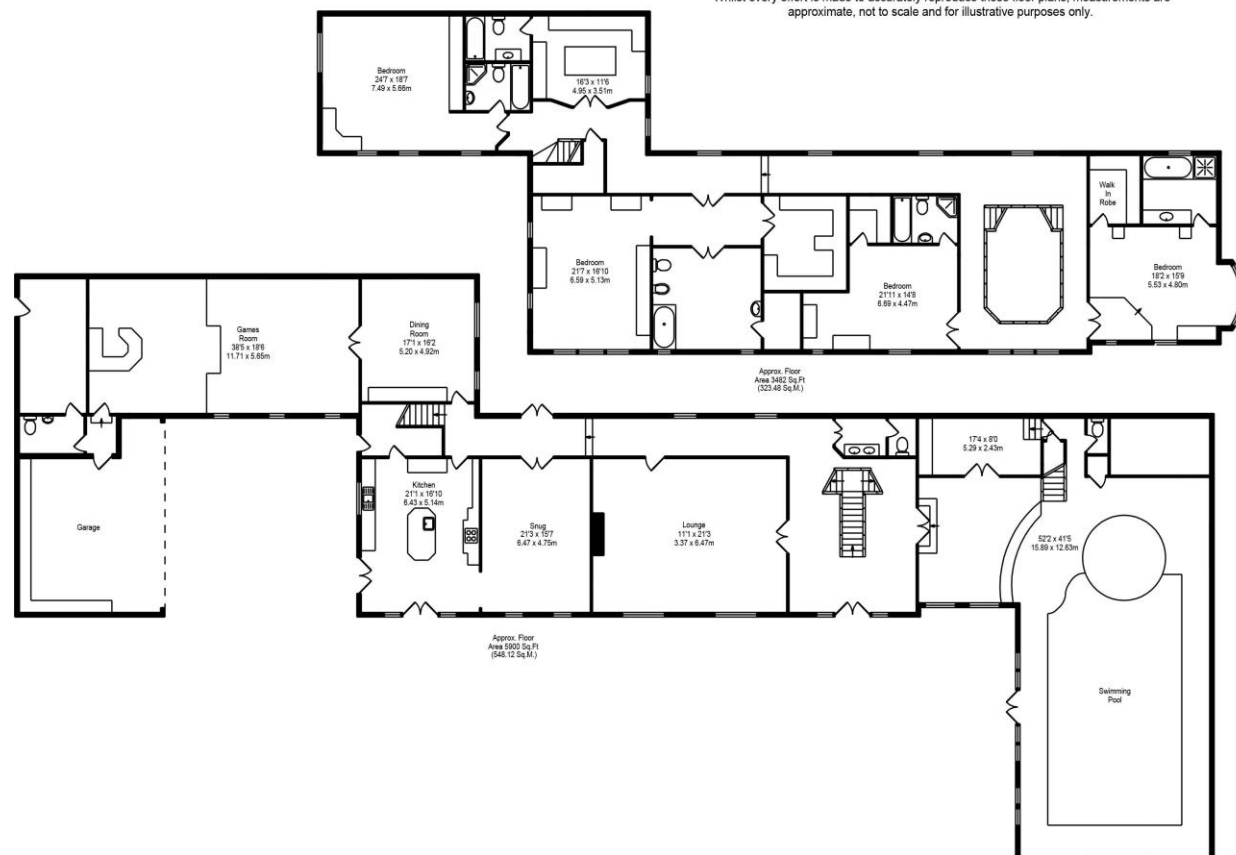


TRACY PHILLIPS

Estates

Bradshaw Road, Bradshaw Total Approx. Floor Area 9382 Sq.Ft. (871.60 Sq.M.)

Whilst every effort is made to accurately reproduce these floor plans, measurements are approximate, not to scale and for illustrative purposes only.



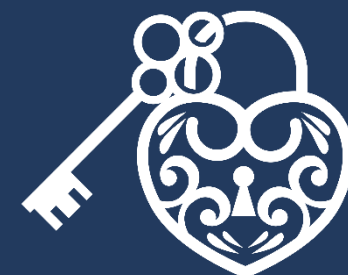
01257 422228

enquiries@tracyphillipsestates.com

tracyphillipsestates.com

Price on Application

Bradshaw Road, Bolton



Every care has been taken with the preparation of this Sales Brochure but it is for general guidance only and complete accuracy cannot be guaranteed. If there is any point, which is of particular importance professional verification should be sought. This Sales Brochure does not constitute a contract or part of a contract. We are not qualified to verify tenure of property. Prospective purchasers should seek clarification from their solicitor or verify the tenure of this property for themselves by visiting www.landregisteronline.gov.uk. The mention of any appliances, fixtures or fittings does not imply they are in working order. Photographs are reproduced for general information and it cannot be inferred that any item shown is included in the sale. All dimensions are approximate.

Meadow Barn is, quite simply, a stunning stone-built detached residence offering in excess of 9,900 square feet of sumptuous accommodation nestled within the rolling Lancashire countryside. A unique home of distinction that is almost without compare and unparalleled in terms of its almost unassailable standards of quality and luxury.

Built in 1999, this stone barn conversion rests within a private gated estate extending to approximately 35 acres and this distinctive and elite home is probably one of Bolton's finest and most unique residences. Few properties have the wealth of features this home offers and the sheer splendour, standard of finish and grounds of this home are almost overwhelming. Brimming with delightful character features blended seamlessly throughout, Meadow Barn is a home of pure unashamed luxury and decadence. The impeccable quality of finish in this hallmark property, finished with opulence and style exuded on the grandest of scales, is evident throughout the home, not least in the fabulous indoor swimming pool, and the finest quality fixtures and fittings by Clive Christian utilised throughout the home, creating a truly mesmerising ambiance. Our client's care for the home with an exceptional eye for detail and this beautifully maintained home, both internally and externally, is a credit to them.

Accommodation highlights include grand reception hallway, cloaks/wc, living room, sitting room, breakfast kitchen, utility room, dining room, games/entertaining room, indoor heated pool complex, four bedroom suites all having their own beautiful en-suite facilities, fitted office suite with additional shower room, and a dressing room and walk in steam/jet room to the master bedroom.

Approached via two sets of electronically operated gates and a long private driveway which sweeps it's way past mature woodland and open pasture land, the property is surrounded by nature and commands breath-taking open aspects. The perfect setting includes a five-hole pitch & putt golf course and an all weather tennis court. There is extensive parking on the stone flagged forecourt and access to a double garage. The property rests in a rural location and offers seclusion and privacy but within easy reach of Bolton town centre and extensive local facilities. Manchester is within half an hour's drive, and there are a host of highly regarded schools within easy reach.





