

# Victoria Road, Blandford Forum, Dorset, DT11











This super example of a circa late 1800's Mid Terrace Character Cottage is set within a very short walk of the amenities of the Georgian Market Town of Blandford Forum and open countryside spaces afforded by the North Dorset Trailway. With two good sized bedrooms and an open plan Living/Dining room arrangement, the Cottage exudes warmth and homeliness whilst being light and airy throughout. The south facing garden has a pedestrian gate for side access, a decked area for alfresco dining and outbuildings. Well maintained and improved by the current owners, EPC 'D', the Cottage is presented with No Onward Chain.

 1  2  1  On Road

- Delightful Character Cottage with NO ONWARD CHAIN
- Two Good Sized Bedrooms
- Converted Attic Providing Additional Space
- Open Plan Living/Dining Room
- South Facing Garden with Pedestrian Side Access
- Well Maintained and Improved Throughout
- Not Graded
- Close to Market Town Amenities



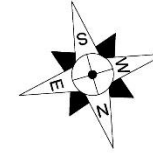
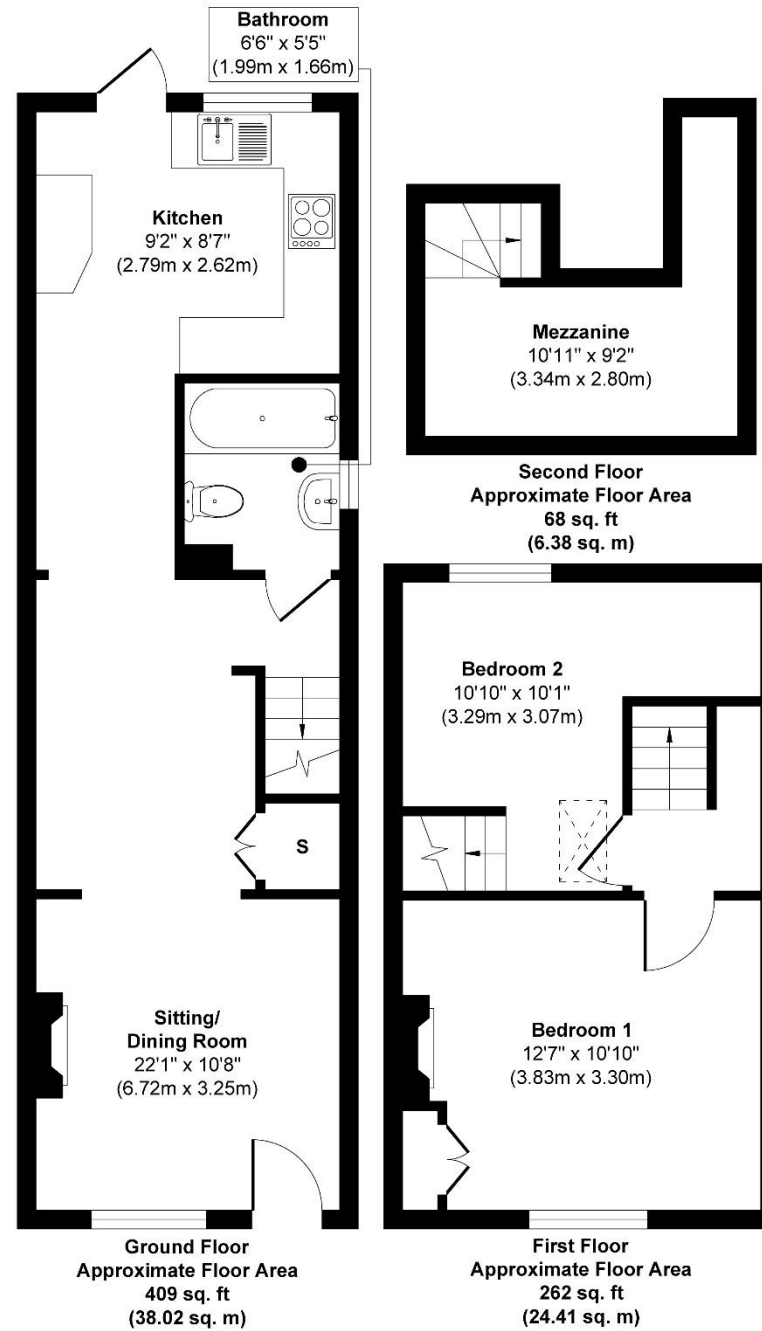
**Susie Palin**

07570 357 553

[susie.p@meyeresstates.com](mailto:susie.p@meyeresstates.com)



# Victoria Road, DT11



**Approx. Gross Internal Floor Area 739 sq. ft / 68.81 sq. m**

Copyright Meyers Estates 2024. This information has been prepared as a guide only. The vendor and estate agents make no warranties as to its accuracy and all interested parties must rely on their own enquiries.

Produced by Elements Property