



Lansdown Lane, Bath

£105,000

Retirement Apartment, Weston



4 Mount Haviland Lansdown Lane Bath BA1 4NB

PRICE: £105,000

A superbly appointed, refurbished ground floor one bed roomed apartment within this popular development on Lansdown Road, just above Weston Village. For the over 60's, this is an ideal opportunity for those wanting an affordable home in Bath. The apartment has a fitted Kitchen off to one side and a large separate bathroom suite. Living room with access onto a patio and then communal gardens. Parking, gardens, reading room, guest room, social room, dining room, communal kitchen and warden facilities. The village of Weston is just down the hill and on a regular bus route. The management fees are £193.84 Per calendar month until 31/03/15 and

includes: all staff, water, lift, maintenance of the exterior of the building; gardens and building insurance. Mount Haviland warden: 01225 421432. Management company: Abbeyfield Society - Tel: 01727 857536

Over 60's Development

Refurbished

Living Room

Bedroom

Kitchen Area

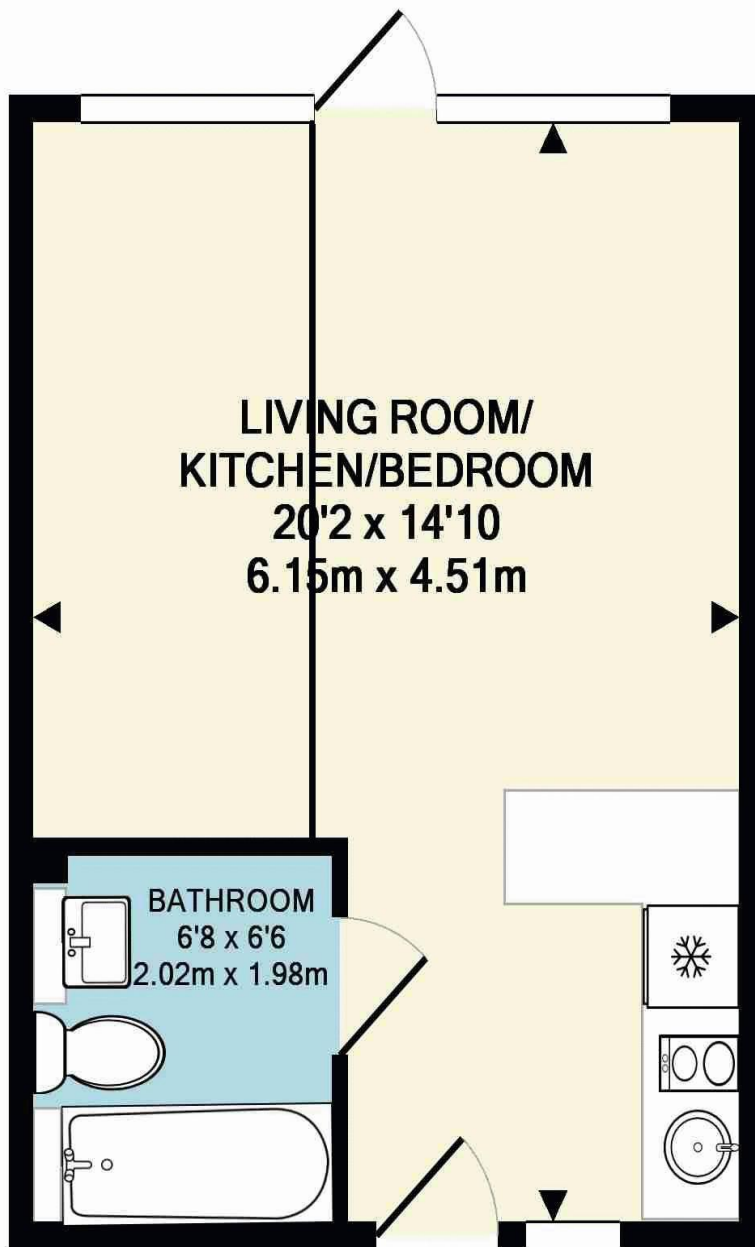
Bathroom

Excellent Communal Facilities

Communal Parking

Council Tax Band A £983





TOTAL APPROX. FLOOR AREA 298 SQ.FT. (27.7 SQ.M.)

All measurements of walls, doors, windows, fittings and appliances, their size and locations are approximate and cannot be regarded as being an accurate representation neither by the vendor nor their agent. www.inovusproperty.co.uk

Kit Johnson Residential
26-33 High St
Weston
Bath
BA1 4BX
01225 444447
sales@kitjohnson.co.uk
www.kitjohnson.co.uk