



Whitehall Park, London, N19

£1,375,000

Freehold

 **litchfields**

44 highgate high street, highgate village, london, n6 5hx

telephone 020 8348 8000 facsimile 020 8348 8232

email highgate@litchfields.com litchfields.com

offices also in hampstead garden suburb & crouch end



First time to the market since 1954! A substantial late Victorian (1898) family house retaining a wealth of period features and offering versatile living and entertaining spaces across three floors. This spacious house, which is in need of refurbishment, provides a rare opportunity to create a superb family home on a sought after residential road in the heart of the Whitehall Park conservation area. The ground floor offers an impressive double reception area with original intercommunicating doors leading on to a dining room overlooking the garden, a separate kitchen, guest cloakroom, separate WC and access to a large cellar. The first floor provides 3 ample double bedrooms. The top floor has another 3 bedrooms and a family bathroom with plenty of scope to re-configure the space to cater for a larger family or to create a home office space. Whitehall Park is enviably located in a small enclave close to local convenience shopping, great schools, Northern Line tube (zone 2), with all the amenities of historic Highgate Village and bustling Crouch End Broadway on the doorstep.





Spacious late Victorian family home (c.2742 sq ft)
First time on the market since 1954
In need of modernisation
3 reception rooms
5/6 bedrooms
Family bathroom & shower room
Kitchen
Downstairs cloakroom
Cellar
Ample storage space
Front and Rear garden
Heart of the Conservation area
Close to local convenience shopping and zone 2 tube



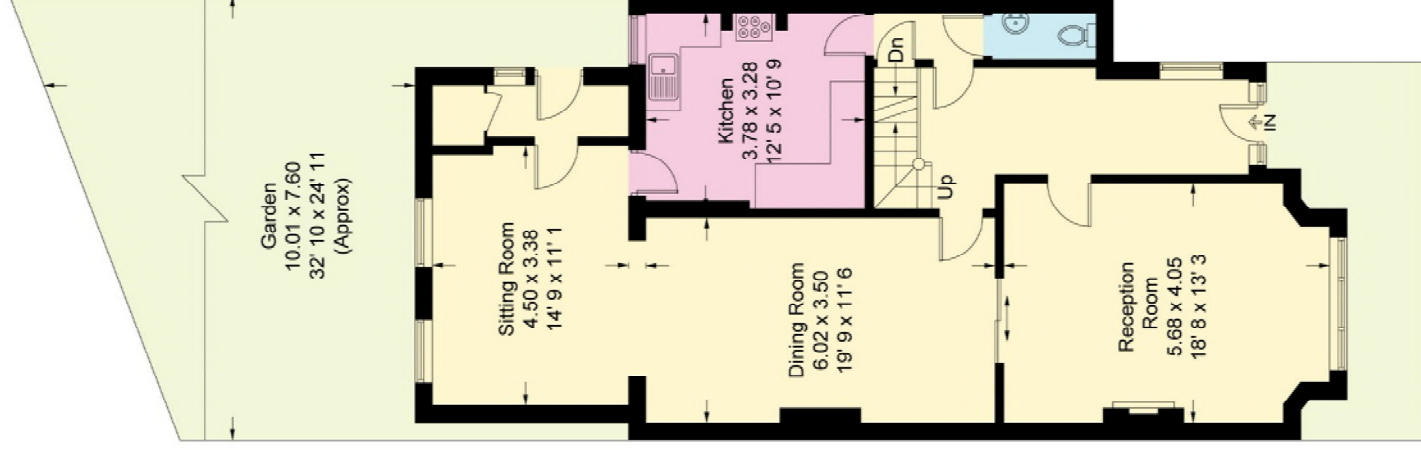


Whitehall Park

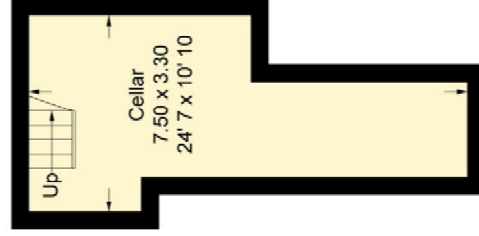
Approximate Gross Internal Area = 2742 sq ft / 254.8 sq m



Second Floor
705 sq ft / 65.5 sq m



Ground Floor
1074 sq ft / 99.8 sq m



Basement
202 sq ft / 18.8 sq m

First Floor
761 sq ft / 70.7 sq m

Not to scale, for guidance only and must not be relied upon as a statement of fact
All measurements and areas are approximate only and have been prepared in accordance with the current edition of the RICS Code of Measuring Practice