



Breakkey & Co



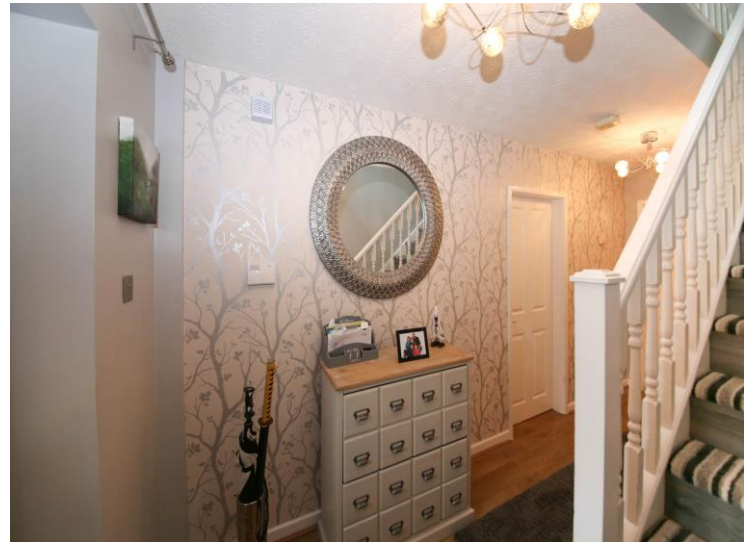
Copeland Drive, Standish

Offers in Excess of £250,000

- Four bedrooms
- Two reception rooms
- Driveway
- Detached
- Beautiful presentation throughout
- Viewings essential
- Popular location
- Garage
- EPC - C



Breakkey & Co



DESCRIPTION

Copeland Drive is a popular development of all detached homes that has firmly established itself as a really nice place to live and raise a family. This quiet location is perfectly located within easy walking distance of great schools, local shops and amenities and is short drive to Junction 27 of the M6 motorway. This attractively designed house is well presented throughout with a recently modernised WC and En suite. The accommodation comprises; Entrance hallway, lounge with beautiful feature fireplace with log burner, dinning room, modernised WC/cloaks, and fully fitted extended kitchen. To the first floor there are four bedrooms with master benefiting from a newly refurbished en-suite. A white modern bathroom suite completes the first-floor accommodation. Externally there are attractive gardens to the front and rear, the rear garden is lawned with patio area. To the front elevation there is a driveway providing off road parking. Viewings are recommended to appreciate the quality and size of accommodation on offer.





Breakaway & Co

ACCOMMODATION

Lounge 4.55m (14'11") x 3.14m (10'4")

Dining Room 3.14m (10'4") x 2.86m (9'5")

Kitchen 2.19m (7'2") x 2.00m (6'7")

Bedroom 1 3.56m (11'8") x 3.15m (10'4")

Bedroom 2 3.15m (10'4") x 2.00m (6'7")

Bedroom 3 3.00m (9'10") x 2.70m (8'10")

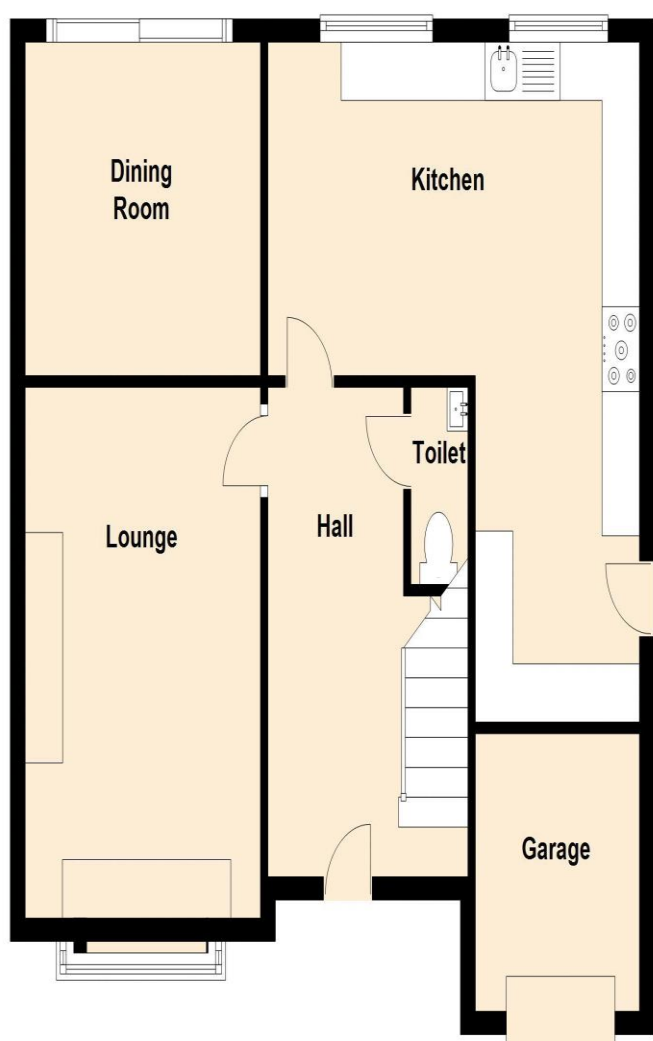
Bedroom 4 4.41m (14'6") x 2.70m (8'10")





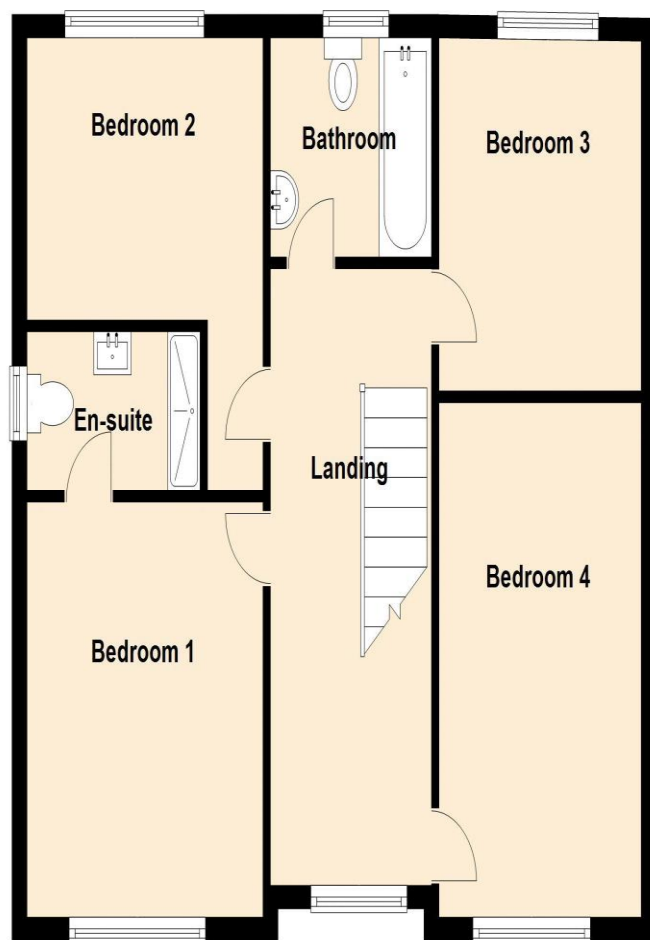
Ground Floor

Approx. 62.6 sq. metres (673.4 sq. feet)



First Floor

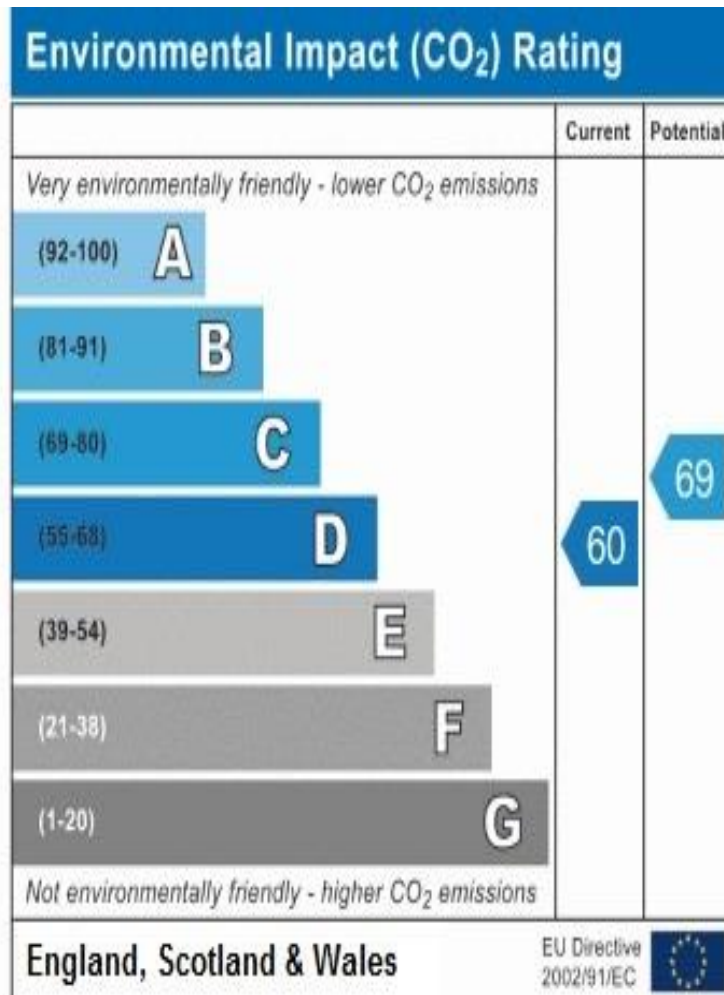
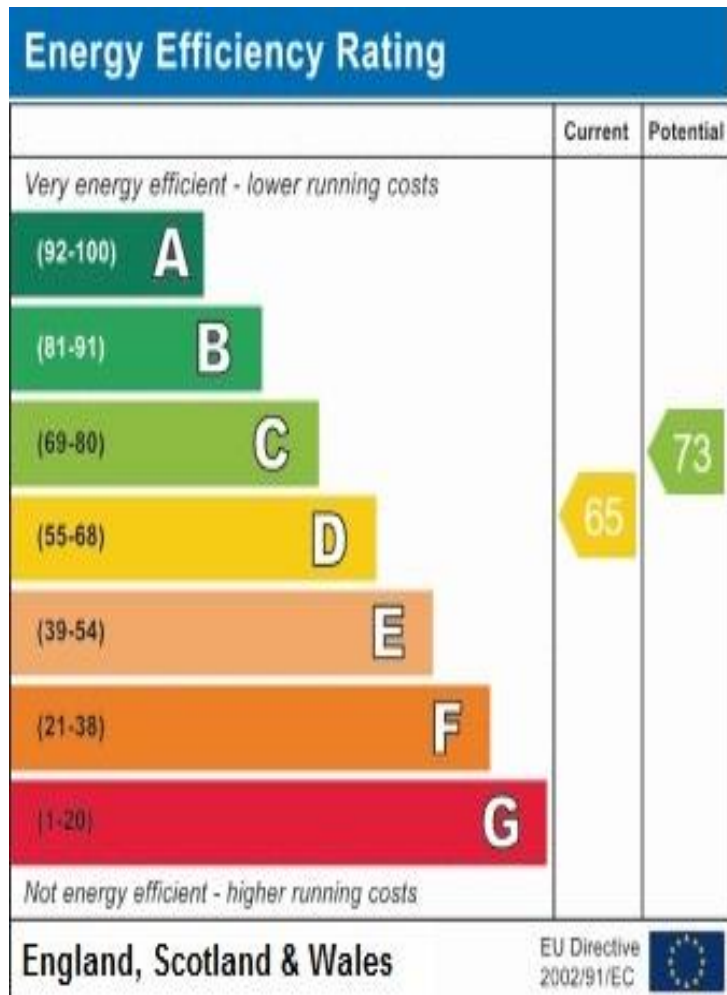
Approx. 60.4 sq. metres (650.5 sq. feet)



Total area: approx. 123.0 sq. metres (1323.9 sq. feet)



Breakahey & Co



Breakahey & Co

57-59 Ormskirk Road

Saddle Junction

Wigan

Lancashire

WN5 9EA

info@breakaheyandco.com

WN5 9EA