



**Oakwood Road, Hampstead Garden Suburb,
NW11**

Weekly Rental Of £520



800 finchley road, hampstead garden suburb, london, nw11 7tj

telephone 020 8458 5000 facsimile 020 8209 2068

email sales@litchfields.com web litchfields.com

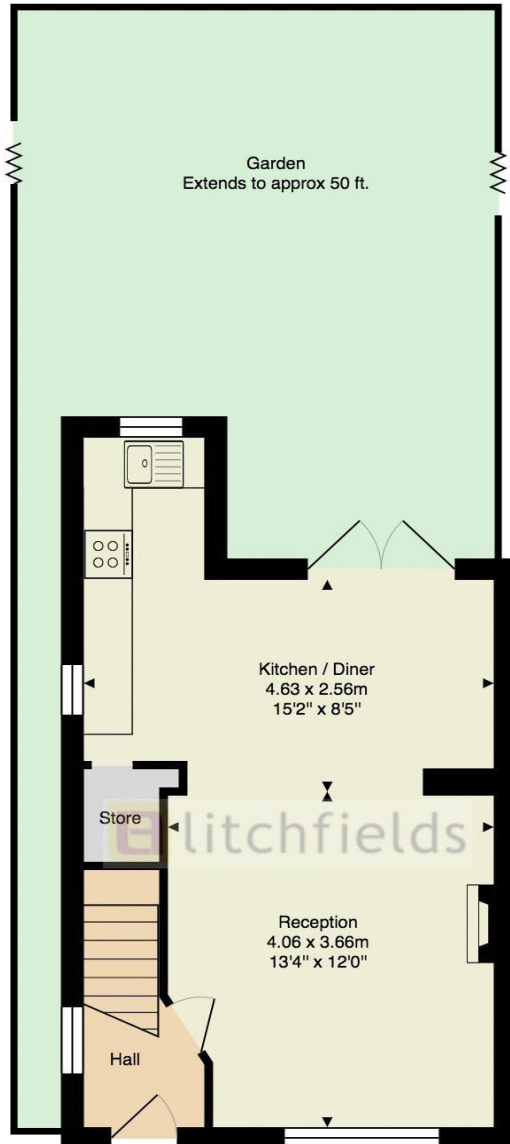
offices also in crouch end & highgate

Brand newly refurbished pretty Three Bed Semi-Detached Cottage arranged over 3 floors and placed in this popular South Side road close to the Market Place Shops, Restaurants, Cafes & buses as well as Big Wood. Featuring hard wood floors throughout the ground floor and comprising entrance hall, open plan kitchen and double reception room with double glazed patio doors onto the rear garden, utility cupboard. 1st floor has a double and single bedroom with a stunning family bathroom; top floor has a double bedroom with ample eaves storage. Unfurnished. **move in charges of £150 per applicant to include agreement creation and referencing charges. check-out costs will also apply.

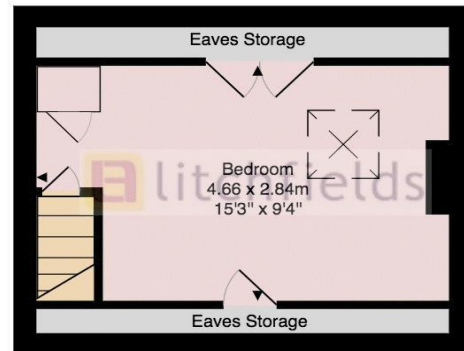
3 Bedroom Semi-Detached Cottage | Brand Newly Refurbished | Open Plan Kitchen | Reception | Reception | Wood Floors | Stunning Bathroom/wc | Opposite Big Wood & short walk Market Place Shops, Restaurants & Buses | Large rear Garden & patio | Unfurnished | EPC D



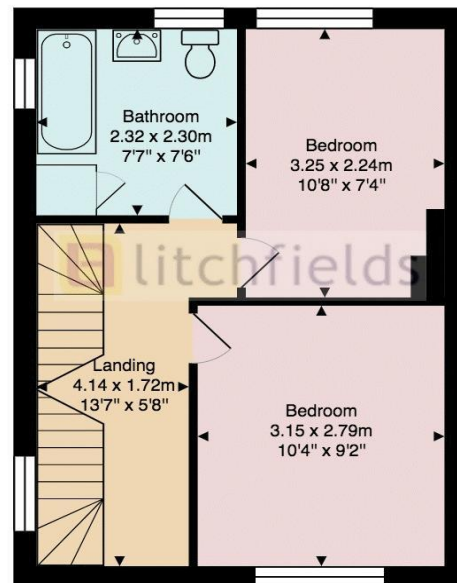
Oakwood Road



Ground Floor



Second Floor



First Floor

Approx. Gross Internal Area: 77.1 m² ... 830 ft²

All measurements and areas are approximate only.
Dimensions are not to scale. This plan is for guidance
only and must not be relied upon as a statement of fact.
(c) Peninsula Surveys Ltd

For full details on all available properties, please visit our website;
www.litchfields.com or call our office on 0208 341 3336