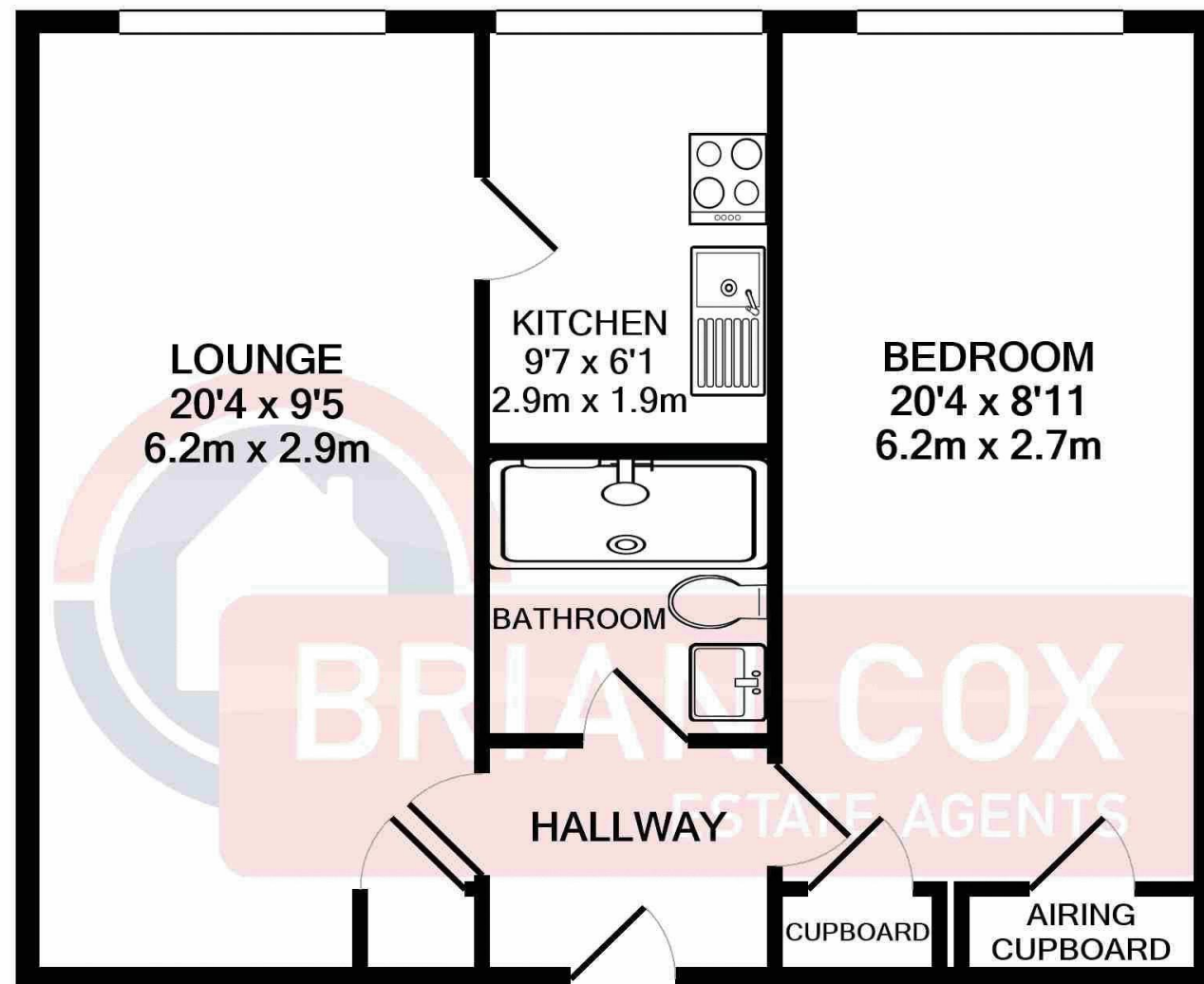


the floorplan...



Whilst every attempt has been made to ensure the accuracy of the floor plan contained here, measurements of doors, windows, rooms and any other items are approximate and no responsibility is taken for any error, omission, or mis-statement. This plan is for illustrative purposes only and should be used as such by any prospective purchaser. The services, systems and appliances shown have not been tested and no guarantee as to their operability or efficiency can be given
Made with Metropix ©2020

more details from...

call: **Brian Cox Sudbury: 0208 422 1007**
email: steve.pusey@brian-cox.co.uk
web: www.brian-cox.co.uk



Consumer Protection from Unfair Trading Regulations 2008 We have not tested any apparatus, equipment, fixtures, fittings or services and so cannot verify that they are in working order or fit for purpose. You are advised to obtain verification from your solicitor or surveyor. References to the tenure of a property are based on information supplied by the seller. We have not had sight of the title documents and a buyer is advised to obtain verification from their solicitor. Items shown in photographs are not included unless specifically mentioned within the sales particulars, but may be available by separate negotiation. We advise you to book an appointment to view before embarking on any journey to see a property, and check its availability.



0208 422 1007
brian-cox.co.uk



Located just a short distance from Shops and transport links is this spacious One bedroom second floor flat. Internally the property is presented in good condition and offers no chain, lift in block and warden on site. Externally you will find that the property is well placed giving the residents easy access to Sudbury Hill's range of shops and transport links.



£99,950
Leasehold

Hartington Close, Harrow HA1 3RR



in brief...

- Second Floor
- One Bedroom
- Retirement
- No Chain
- Spacious
- Warden Controlled



the location...

nearest stations ...

Sudbury Hill Harrow (0.1 miles)

Sudbury Hill (0.0 miles)

South Harrow (0.8 miles)

Sudbury Hill is a suburb in the London Borough of Harrow, located in North West London, United Kingdom.

There are many local schools in the area some of these include St George's Primary School, Wood End Academy, Greenwood Primary School and Horsenden Primary School.

There are two stations in the area which are, Sudbury Hill Station (Piccadilly Line) and Sudbury Hill Harrow Station served by National Rail (Chiltern Railways).