



Quernmore Road, N4

£1,499,999

Freehold

Castles



Quernmore Road, N4

A delightful five-bedroom, period, End-of-Terrace, family home. This charming residence offers an abundance of light and well-proportioned rooms throughout, retaining a host of desired period features. Ideally positioned on a tree-lined residential road within a moments' walk of St Aiden's school and Harringay Station, providing easy access to the City and West End and equidistant to the array of amenities on Stroud Green and Crouch End's hub. Further comprising two receptions, guest w.c., spacious kitchen/diner with linked utility room, two family bathrooms, en-suite and ample storage via loft and cellar. Benefitting from private rear garden and potential to further convert loft room. We highly recommend an early viewing.

EPC Rating: E
Current: 40 Potential: 67

£1,499,999

Freehold

Castles

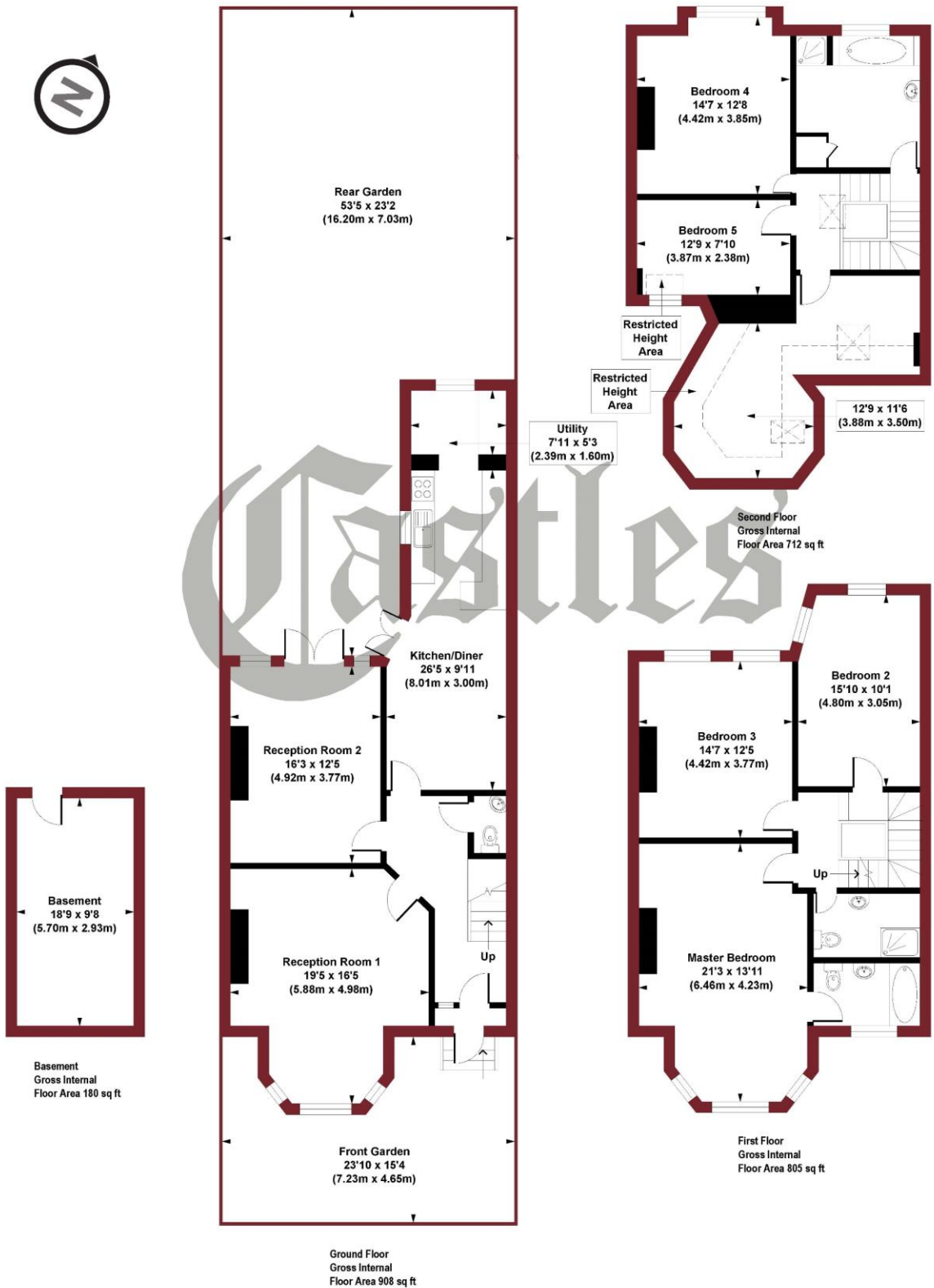
020 8348 5515
crouchend@castles.london



APPROXIMATE GROSS INTERNAL AREA

232.65 sq. m / 2504 sq. ft
(Excluding Restricted Height Area)

242.03 sq. m / 2605 sq. ft
(Including Restricted Height Area)



THIS PLAN IS FOR ILLUSTRATION ONLY AND MAY NOT BE
REPRESENTATIVE OF THE PROPERTY

An Overview of Stroud Green

STROUD GREEN

Stroud Green was designated a Conservation Area by Haringey Council in 2003, it is now regarded as an area of special character or historic interest. The first large building here was Stapleton Hall, built in 1609 and comprising an 80 acre farm until the mid-19th century.

The late 19th-century marked a period of residential development in Stroud Green as the area gained its own railway station and represents Haringey's most diverse examples of Victorian domestic architecture concentrated in any one area.

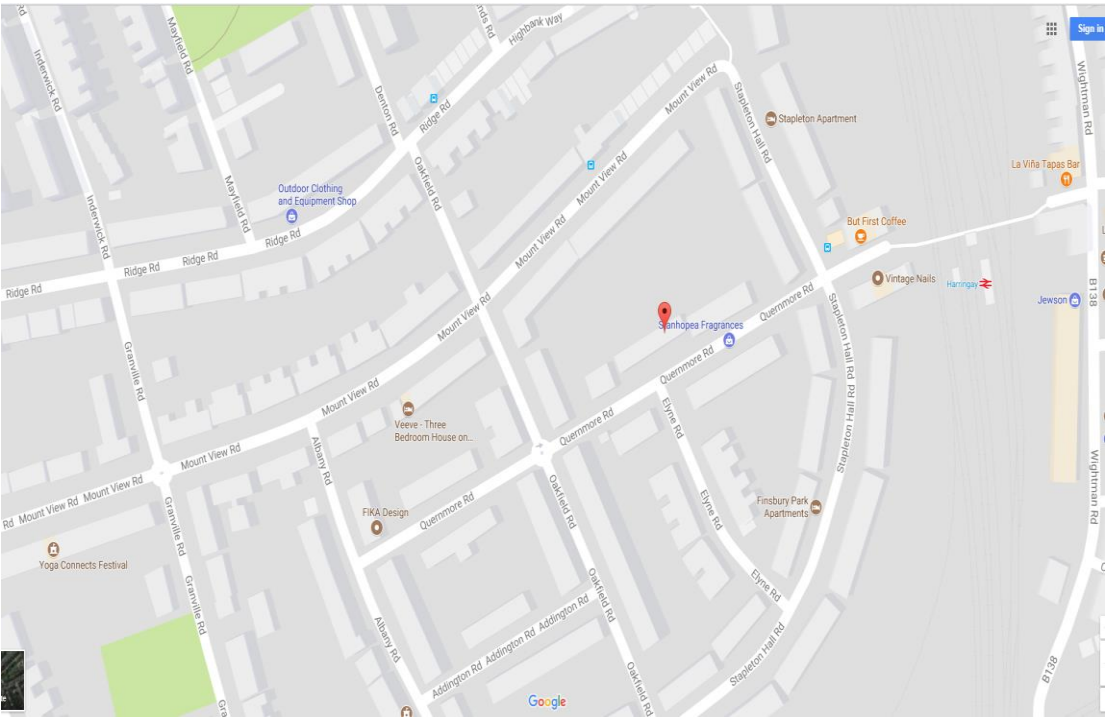
TRANSPORT

Stroud Green is excellently served with numerous train options. Finsbury Park station benefits from two tube lines: Piccadilly and Victoria, and a well-served overground station with services in and out of London direct to Cambridge or Welwyn Garden. Further overground stations are at Harringay (trains every 10 mins direct to Moorgate in 15 mins), Crouch Hill and Green Lanes.

SHOPPING AND LEISURE

Excellent shopping with independent restaurants, cafes and shops are plentiful along Stroud Green Road, Crouch End Broadway and Green Lanes. A stone's throw away from the house, Londis on Ferme Park Road is independently owned and was voted the best Londis store in 2015 with an array of organic produce and craft beers. Entertainment is on the doorstep with the Park Theatre at Finsbury Park opened in 2013 to rave reviews, the Arthouse cinema (voted best cinema by Time Out in 2014) and the Picturehouse cinema are both a short walk away in Crouch End.

Stroud Green is surrounded by parks on all sides from Finsbury Park, a welcome retreat from the city with a lake, gardens and sports facilities, to Green Flag award winner, Stationers Park, and London's longest nature reserve, the Parkland Walk, a 3 mile stretch of a former railway line. In Crouch End there is a host of tennis, cricket clubs as well as a Lido while the extensive Sobell Sports Centre offers facilities for those who prefer indoor play.



12 Topsfield Parade, Crouch End
London N8 8PR
020 8348 5515
crouchend@castles.london
www.castles.london

All details including floorplans are for representation purposes only and do not constitute a contract or warranty. Whilst every effort is made to ensure accuracy of descriptions and measurements, no responsibility is taken for errors, omissions and misstatements.

