

Diamond Way, Blandford Forum, Dorset, DT11







A superb example of a Charles Church Developments' End of Terrace 3 Bedroom Family Home set within walking distance of the Georgian Market Town of Blandford Forum. Well maintained and presented throughout, the property exudes warmth yet is very light and airy. The modern kitchen is of a good size with the open plan living/dining room, flooded with light by the French doors to the rear garden. Two off-road parking spaces are at the back of the garden accessed via a pedestrian gate. A great opportunity for a First Time Buy, downsize or for a small growing family.

 1  3  2  2

- Immaculate Throughout
- 3 Good Sized Bedrooms
- Master Ensuite
- Downstairs Cloakroom
- 2 Off-Road Parking Spaces
- Walking Distance to Local Amenities
- Easy to Maintain South/South East Facing Rear Garden
- Scope to Extend if Required



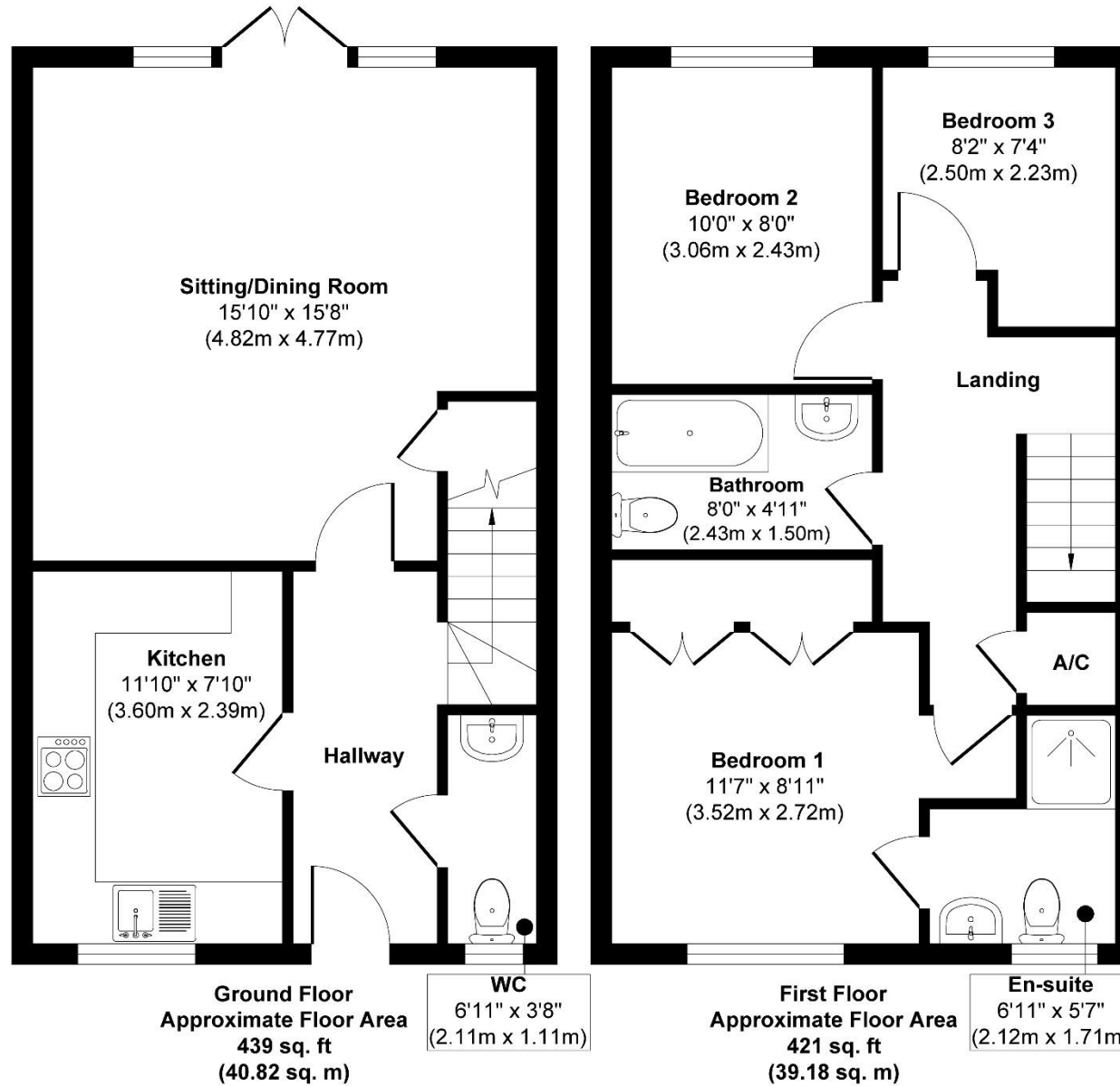
Susie Palin

07570 357 553

susie.p@meyersstates.com



Diamond Way, DT11



Approx. Gross Internal Floor Area 860 sq. ft / 80.00 sq. m

Copyright Meyers Estates 2022. This information has been prepared as a guide only. The vendor and estate agents make no warranties as to its accuracy and all interested parties must rely on their own enquiries.

Produced by Elements Property