



Connaught Gardens, Muswell Hill, N10

£1,550,000

Freehold



44 highgate high street, highgate village, london, n6 5hx

telephone 020 8348 8000 facsimile 020 8348 8232

email highgate@litchfields.com litchfields.com

offices also in hampstead garden suburb & crouch end





A beautifully presented semi-detached Edwardian Family home (1905) located on a quiet tree lined residential road on the Highgate-Muswell Hill borders. This well maintained house provides very well balanced living and entertaining space on two floors. The ground floor offers an elegant front reception, spacious rear reception/dining room with French doors on to the garden and a lovely open-plan kitchen breakfast room and conservatory overlooking the superb, low maintenance, south facing garden and woodlands to the rear (Queens Wood). In addition there is a downstairs utility and shower room. The first floor has 3 ample size double bedrooms, the master having views across to Alexandra Palace, a good size single bedroom and a stylish family bathroom with separate shower cubicle. There is currently access to a very large storage loft with potential (subject to the usual permissions) to create a further two bedrooms and bathroom. Homes on this side of the road with south facing gardens and views over the woods rarely come on the market. Connaught Gardens is well positioned for fast access to Highgate tube and the delights of Highgate & Queens Woods as well as local shopping and amenities of Muswell Hill Broadway. EPC - D







Semi-Detached Period Family House
2 Receptions
4 Bedrooms
Large open-plan Kitchen-Conservatory
Downstairs Utility & Shower Room
Beautiful, mature south facing rear patio & Garden
Large Loft with Conversion Potential
Side access to garden
Views to Ally Pally and Woodland
Close to Highgate Tube (Northern Line)
Close to Queens & Highgate Woods
A quarter of a mile from all the amenities of Muswell Hill Broadway





Connaught Gardens

Approximate Gross Internal Area
148.4 sq m / 1597 sq ft

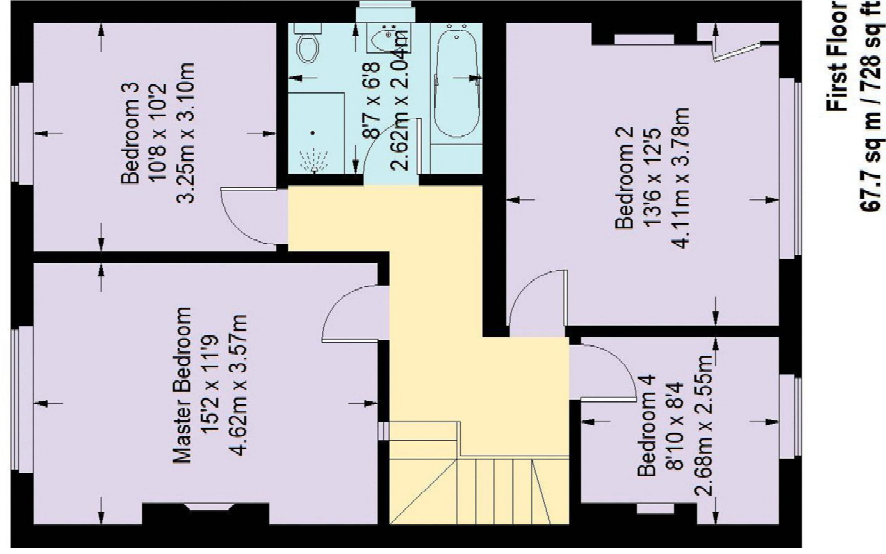
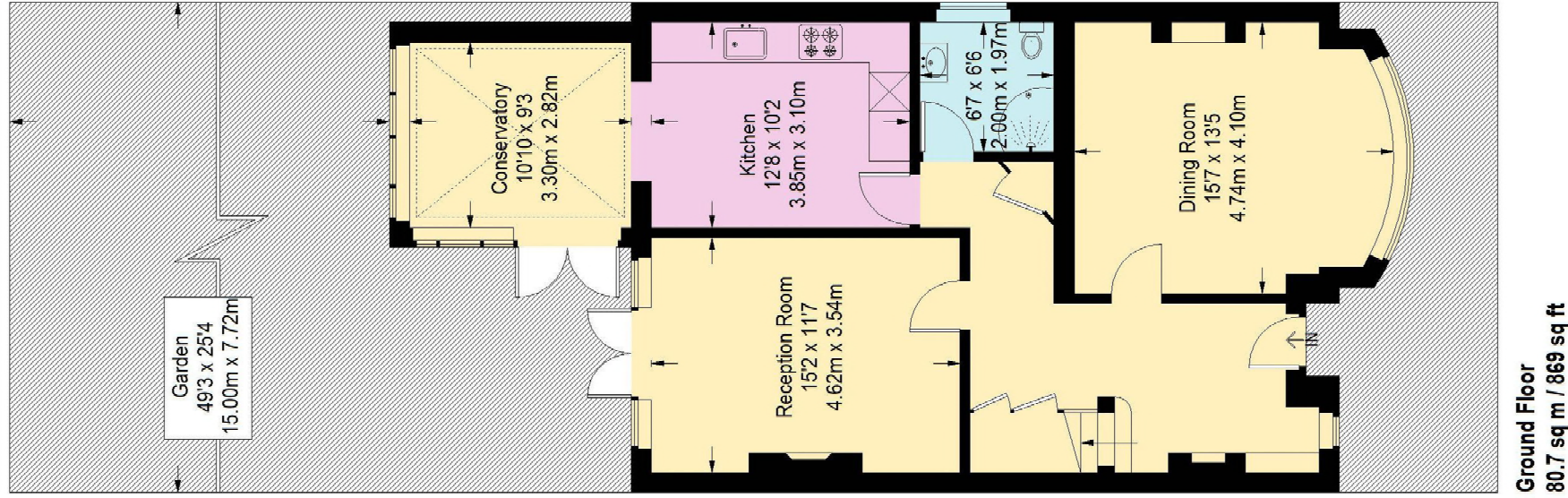


Illustration for identification purposes only, measurements are approximate, not to scale. (ID369542)