



Corringham Road, Hampstead Garden Suburb, NW11

Freehold

£2,850,000



800 finchley road, hampstead garden suburb, london, nw11 7tj

telephone 020 8458 5000 facsimile 020 8209 2068

email [sales@litchfields.com](mailto:sales@litchfields.com) web [litchfields.com](http://litchfields.com)

offices also in crouch end & highgate



A spacious, prominent and handsome Grade II\* Listed family house built in 1912 and designed by renowned architects Parker & Unwin in the style of Edwin Lutyens. This charming, character home is superbly located within a beautiful and quiet square situated within steps from the Heath Extension and walking distance to Golders Green Tube Station. This excellent family house benefits from 3 separate reception rooms and a wonderful wrap-around south-west facing rear garden. Viewing of this distinguished residence is highly recommended.

6 bedrooms | 3 reception rooms | Kitchen/breakfast room | 3 bathrooms (2 en suite) | 2 guest wcs | Set in a quiet and picturesque square | Close to The Heath Extension | Large south-west facing rear garden.

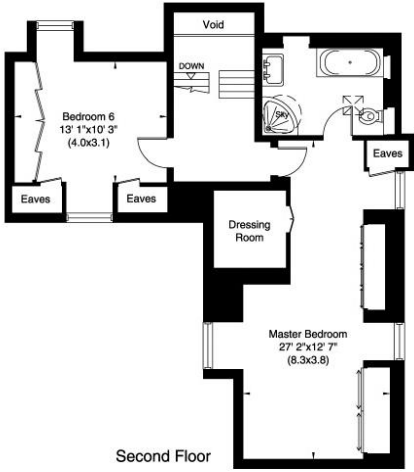
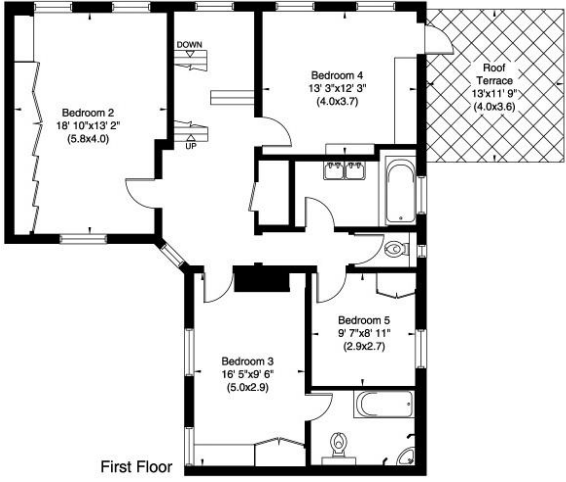
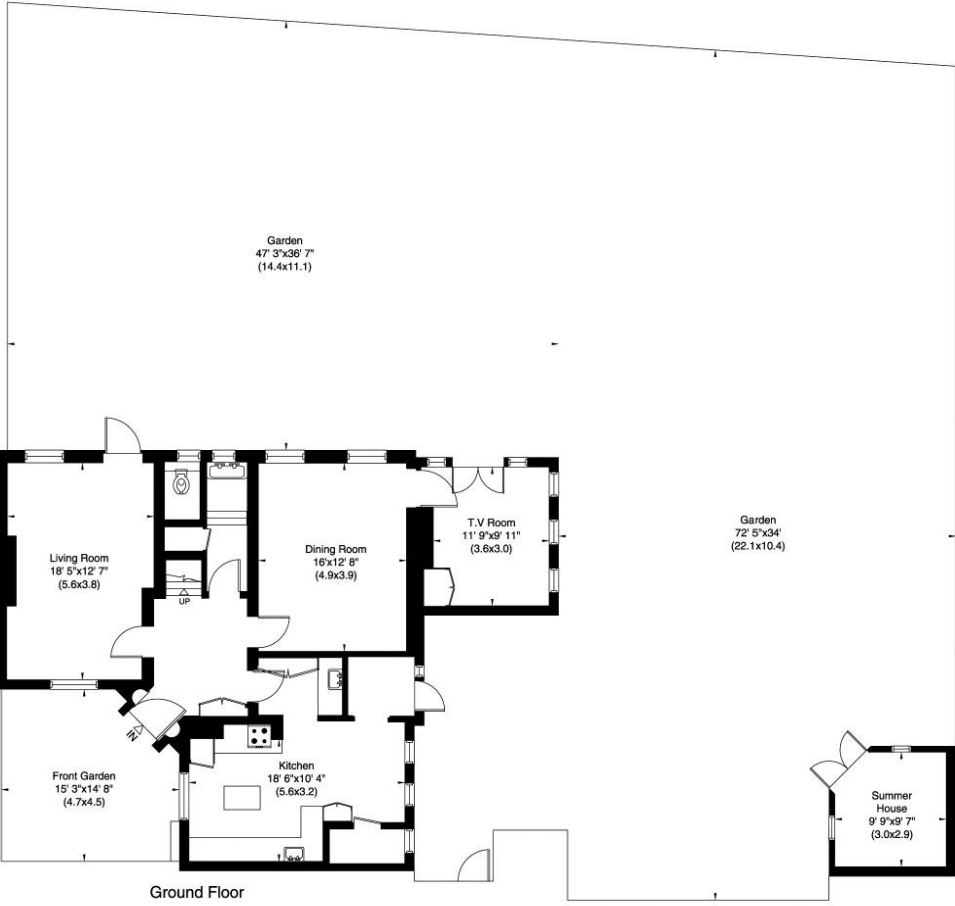






# CORRINGHAM ROAD LONDON NW11

Gross Internal Area: 266 Sq. metres  
2865 Sq. feet



Whilst every effort is made to ensure these details are accurate, all measurements given are approximate and for guidance only. We are unable to comment on the structure of the building or services and any investigations should be carried out by a qualified surveyor. We strongly advise you to ensure that all legal aspects are fully investigated by your solicitor prior to a purchase. We have not applied tests to any appliances or equipment and therefore cannot verify these are in good working order. We understand from the vendor that the fixtures and fittings listed are to be included in the sale price but these may be subject to negotiation.