



**22 Oxmead Street, Ewhurst  
Plot 15 The Woodhill - Firethorn Place**

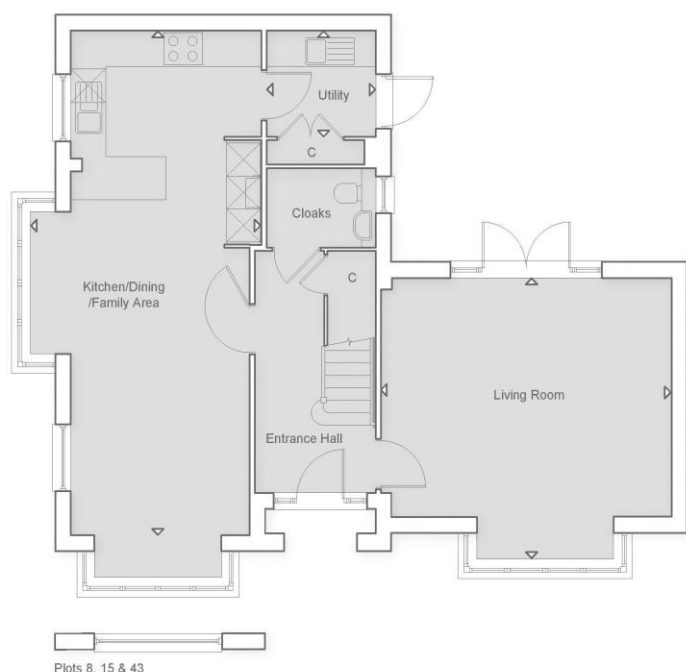
**£954,950 - Freehold**





**Stunning new home in Surrey village setting \* Stamp duty incentive available\* T&Cs apply \*  
Ready to move in \* 4 Bedrooms \* 2 Bath/Shower Rooms \* Open plan Kitchen/Dining/Family  
Area \* Generous Living Room \* Double Garage with studio above**

**\*\* Ready to move in \*\*** Situated in this exclusive new development near the heart of the tranquil Surrey Hills village of Ewhurst. This 4 bedroom detached home will exceed expectations both inside and out with plenty of parking including a double garage with home office/studio above. The elegant and characterful design of these homes by Croudace Homes really fit into the rural village setting and the close is positioned favourably with the local shop, infant school and other local amenities within walking distance. Moving inside, the property is well planned with a generous living room with bay window and a superb open plan kitchen/dining/family room being the real hub of the home. A useful utility room and cloakroom complete the ground floor. Upstairs is equally impressive with 4 good sized bedrooms including the principal bedroom with built in wardrobes and a contemporary en-suite shower room. Viewing of the show unit is by appointment only so please contact us today to arrange your appointment. Please note - internal photos are of a Croudace show home rather than this particular unit.



Ground Floor Plan



First Floor Plan

(Type G4032MW)  
Ewhurst  
Plot 12

**Important Notice:** For clarification, we wish to inform prospective purchasers that these sales particulars have been prepared as a general guide. We have not carried out a detailed survey, nor tested any appliances, equipment, fixtures or services, so cannot verify that they are in working order, or fit for their purpose. Room sizes are approximate: They are taken between internal wall surfaces as indicated on the prepared floor plan.

