

Knightley Walk | SW18 1HD

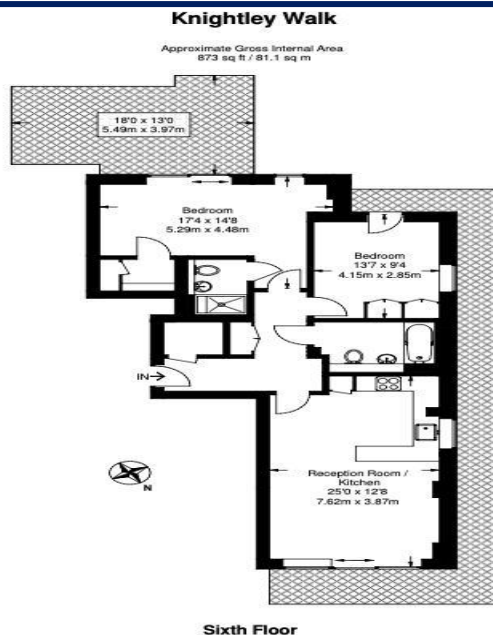
PCM: Monthly Rental Of £2,500



- **Secure Underground Parking**
- **Two Double Bedrooms**
- **En-Suite Shower Room**
- **Two Balconies both South and North Facing**
- **Open Plan Kitchen Reception Room**
- **Prime Location**

Description:

Chartwell Residential is delighted to market this beautifully-presented, modern two-bedroom apartment in this popular development close to the River Thames and Wandsworth Park. This stunning sub penthouse is on the 6th floor and has direct access to its own private terrace from both the bedrooms and the reception room. In a prime location Wandsworth Town Station is just a short walk away; giving easy access for all transport links into Central London. The river bus stop is also situated nearby at Riverside Quarter which has a direct service to Blackfriars during peak hours. The property comprises an open plan kitchen reception room, two double bedrooms one with an en-suite shower room, a separate bathroom, South and North facing terrace and secure underground parking.



Energy Efficiency Rating		Current	Potential
Very energy efficient - lower running costs			
(92 plus) A			
(81-91) B		86	86
(69-80) C			
(55-68) D			
(39-54) E			
(21-38) F			
(1-20) G			
Not energy efficient - higher running costs			
England & Wales		EU Directive 2002/91/EC	
Environmental Impact (CO ₂) Rating		Current	Potential
Very environmentally friendly - lower CO ₂ emissions			
(92 plus) A		92	92
(81-91) B			
(69-80) C			
(55-68) D			
(39-54) E			
(21-38) F			
(1-20) G			
Not environmentally friendly - higher CO ₂ emissions			
England & Wales		EU Directive 2002/91/EC	

Chartwell
RESIDENTIAL

| 020 8780 6790 |
www.chartwelluk.com
info@chartwelluk.com

Knightley Walk | SW18 1HD

PCM: Monthly Rental Of £2,500

MONEY LAUNDERING REGULATIONS 2003

intending purchasers will be asked to produce identification and proof of financial status when an offer is received. We would ask for your co-operation in order that there will be no delay in agreeing the sale.