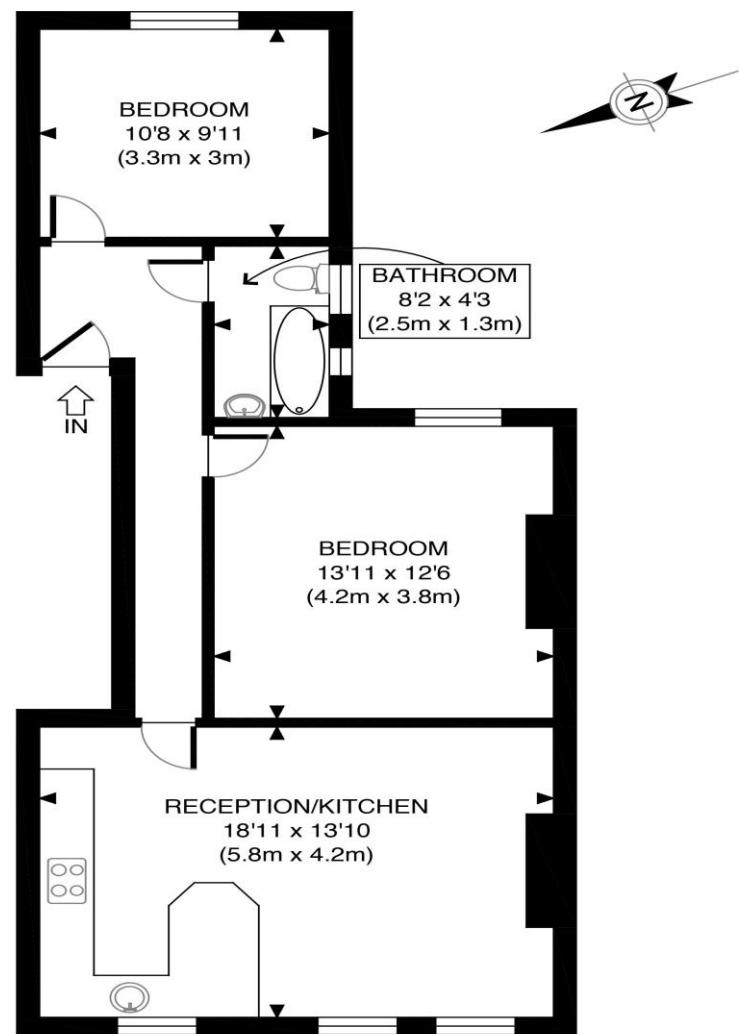


the floorplan...



GROSS INTERNAL FLOOR AREA 673 SQ FT

APPROX. GROSS INTERNAL FLOOR AREA 673 SQ FT / 63 SQM Disclaimer: Floor plan measurements are approximate and are for illustrative purposes only. While we do not doubt the floor plan accuracy and completeness, you or your advisors should conduct a careful, independent investigation of the property in respect of monetary valuation	Station Road	
	date	20/02/24
	photoplan	

more details from...

call: **Brian Cox Harrow: 0208 912 0006**
email: **info@brian-cox.co.uk**
web: **www.brian-cox.co.uk**



Consumer Protection from Unfair Trading Regulations 2008 We have not tested any apparatus, equipment, fixtures, fittings or services and so cannot verify that they are in working order or fit for purpose. You are advised to obtain verification from your solicitor or surveyor. References to the tenure of a property are based on information supplied by the seller. We have not had sight of the title documents and a buyer is advised to obtain verification from their solicitor. Items shown in photographs are not included unless specifically mentioned within the sales particulars, but may be available by separate negotiation. We advise you to book an appointment to view before embarking on any journey to see a property, and check its availability.



0208 912 0006
brian-cox.co.uk



TWO DOUBLE BEDROOM - FIRST FLOOR - LONG LEASE - BEAUTIFULLY PRESENTED. Brian Cox and Company are proud to present this wonderfully presented two bedroom first floor flat in the heart of Harrow. This spacious, well connected property briefly comprises a bright open plan kitchen/living area, two double bedrooms and a modern bathroom. Viewings are highly recommended to fully appreciate all that is on offer, so call now to arrange yours!!



£350,000
Leasehold

Station Road, Harrow
HA1 2RX



in brief...

- Two Double Bedroom
- First Floor Flat
- Long Lease
- Double Glazed / Gas Central Heating
- Convenient Location
- Beautifully Presented



the location...

nearest stations ...

Harrow & Wealdstone (0.4 miles)
Harrow-on-the-Hill (0.6 miles)
Kenton (0.7 miles)

Harrow is a large suburban town in the London Borough of Harrow, North West London, England. It is centred 10.5 miles (16.9 km) North West of Charing Cross.

Harrow has two large shopping centres which are St Anns and St Georges with its many large department stores, restaurants, cafes and cinema.

There are many local schools in the area some of these include Marlborough Primary School, Elmgrove Primary School and Nursery, Whitefriars School and St Anselm's Catholic Primary School.

