



**Jacksons Lane, Highgate Village, N6**

**£1,750,000**

**Share of Freehold**



44 highgate high street, highgate village, london, n6 5hx  
telephone 020 8348 8000 facsimile 020 8348 8232  
email [highgate@litchfields.com](mailto:highgate@litchfields.com) [litchfields.com](http://litchfields.com)  
offices also in hampstead garden suburb & crouch end





We are delighted to offer this simply stunning 3/4 bedroom split-level garden flat within a handsome late Victorian end of terrace house on a sought after Village Road. Beautifully presented throughout and featuring a very elegant and spacious through reception room with high ceilings, original cornices, feature fireplace and stripped wooden flooring. Stairs take you a few steps down to the very stylish Seimatic kitchen-breakfast room which gives access down to the 73ft decked patio and sunny south facing garden. The lower level provides 3 good size double bedrooms including the luxurious master bedroom with ample built-in wardrobes, en-suite shower room and French doors on to the decked patio. There is also a family bathroom, separate utility room and very useful separate entrance on this level. In addition to the main flat there is beautifully designed and recently extended studio apartment at the bottom of the garden with kitchenette and shower room, ideal as granny/nanny accommodation or for longer staying guests. This super flat is very conveniently located being only 350 yards from Highgate tube, Woods, convenience shopping and main bus routes in to London. EPC – E.





**Very Stylish Late Victorian Garden Conversion**  
**Through reception with Period Features & Plantation shutters**  
**Siematic kitchen with Smeg oven and fridge**  
**3 ample Double bedrooms with built-in storage**  
**Master bedroom with en-suite shower room**  
**Family bathroom**  
**Utility room on bedroom level**  
**Separate entrance**  
**Super garden studio-ideal nanny/granny accommodation**  
**73ft South facing patio and rear garden (including Studio)**  
**350 yards from Highgate Underground (Northern Line)**  
**Close to Woods, Village and convenience shopping**  
**EPC - E**







Master Bedroom with En-suite Shower Room







Studio (at bottom of Garden)

73ft Rear Garden leading to Studio





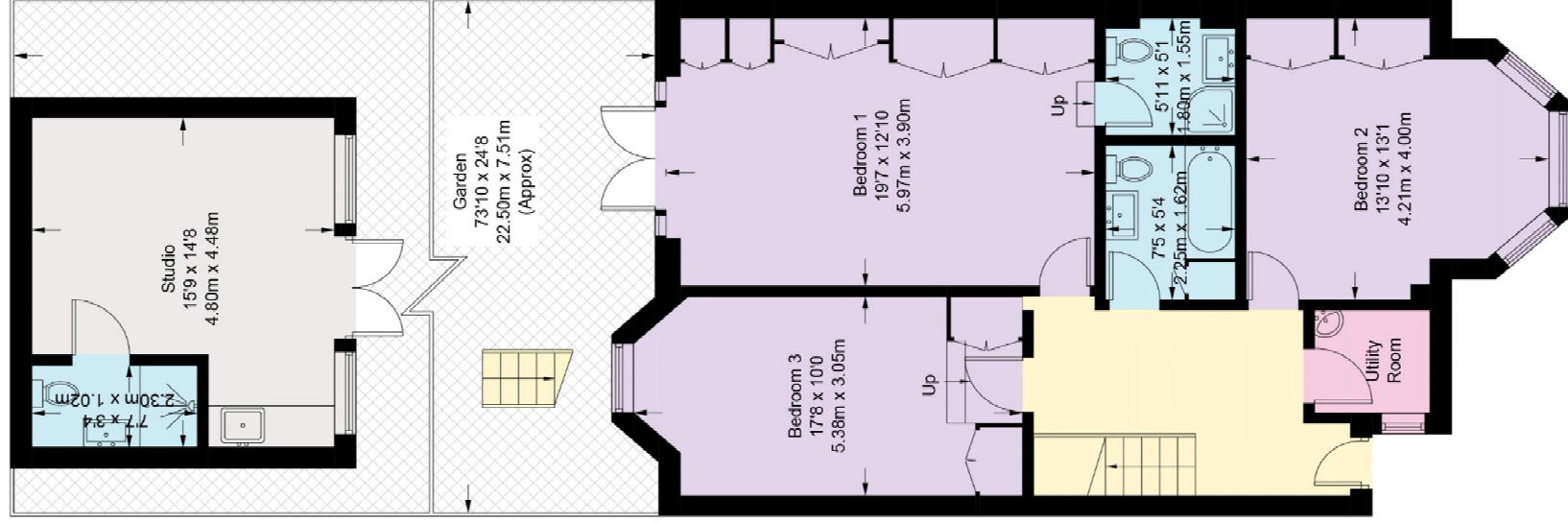


# Jacksons Lane

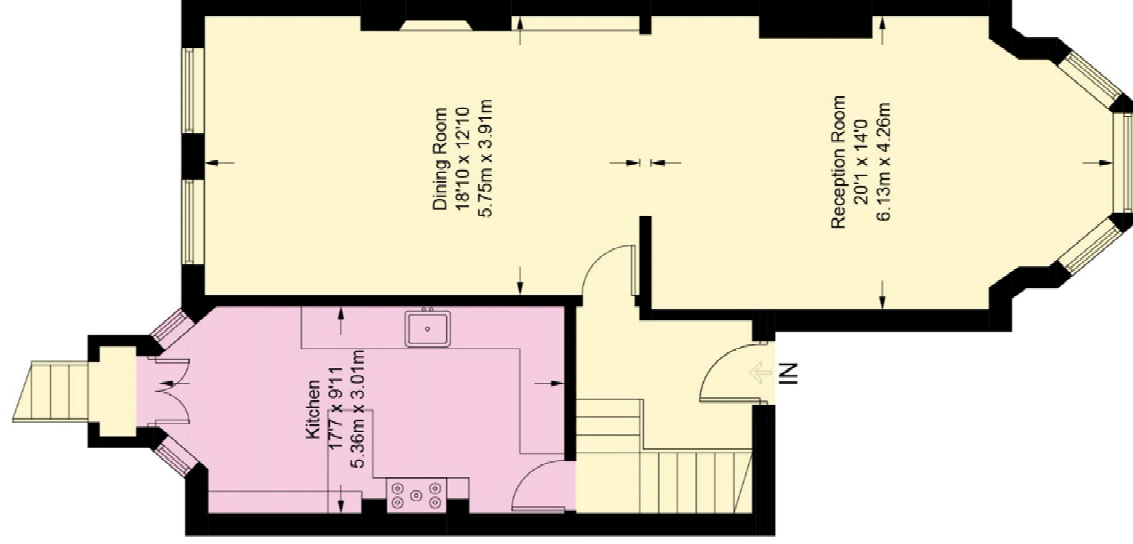
Approximate Gross Internal Area = 1576 sq ft / 146.5 sq m

Studio = 220 sq ft / 20.4 sq m

Total = 1796 sq ft / 166.9 sq m



**Lower Ground Floor**  
825 sq ft / 76.7 sq m



**Raised Ground Floor**  
751 sq ft / 69.8 sq m

Illustration for identification purposes only,  
measurements are approximate, not to scale. (ID337102)