



North Grove, Highgate Village, N6
£675,000 **Leasehold**



44 highgate high street, highgate village, london, n6 5hx
telephone 020 8348 8000 facsimile 020 8348 8232
email highgate@litchfields.com litchfields.com
offices also in hampstead garden suburb & crouch end

A beautifully presented three bedroom first floor apartment forming part of a grand period conversion situated within 200 yards of Highgate High Street. Flooded in natural light and boasting an array of period features, this exquisite apartment has been restored over the last few years. The accommodation comprises a spacious reception room with a dual aspect outlook which is open plan to a high specification kitchen with Miele, Franke and Bosch appliances and quartz worktop, three bedrooms and a luxurious bathroom with marble and underfloor heating. Further benefits include new cast iron radiators, new internal fire doors, engineered wood flooring, refurbished sash windows. The the internal and external communal areas have recently been refurbished (2017-2018). The roof has also been partially renewed in 2017. Externally the property has use of a large well maintained communal garden with a lockable storage box and communal shed. The property is conveniently located only moments away from the restaurants, cafes and bars in Highgate Village and within easy reach to the picturesque surroundings of both Hampstead Heath and Kenwood House. There are also excellent public and private schools within close proximity to the property and good city transport links including Northern Line tube. EPC - D

Double aspect Reception / open plan kitchen

3 bedrooms

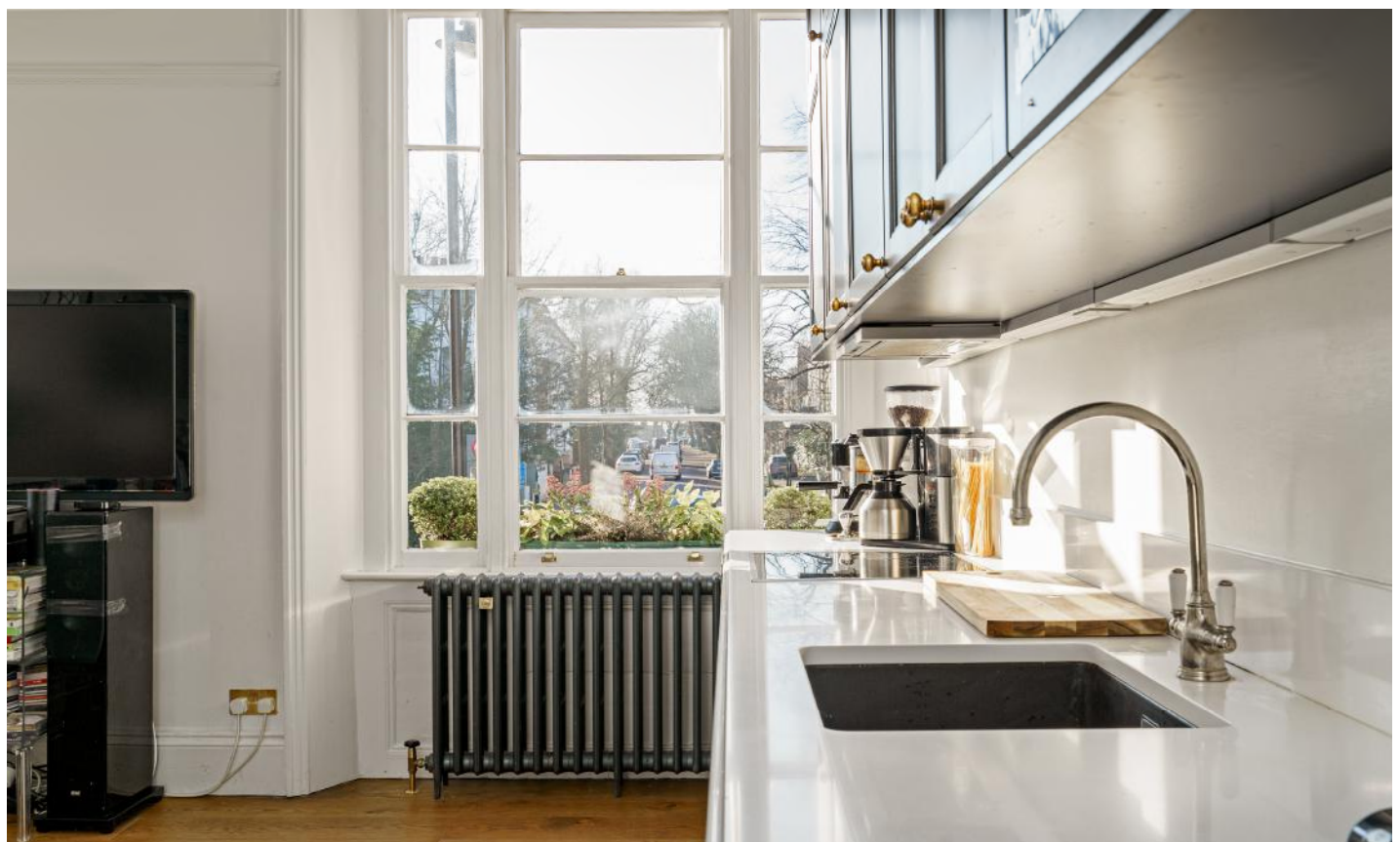
Luxury bathroom with underfloor heating

Access to communal garden

Fantastic Highgate Village location

Close to transport shops and restaurants

Period corner building





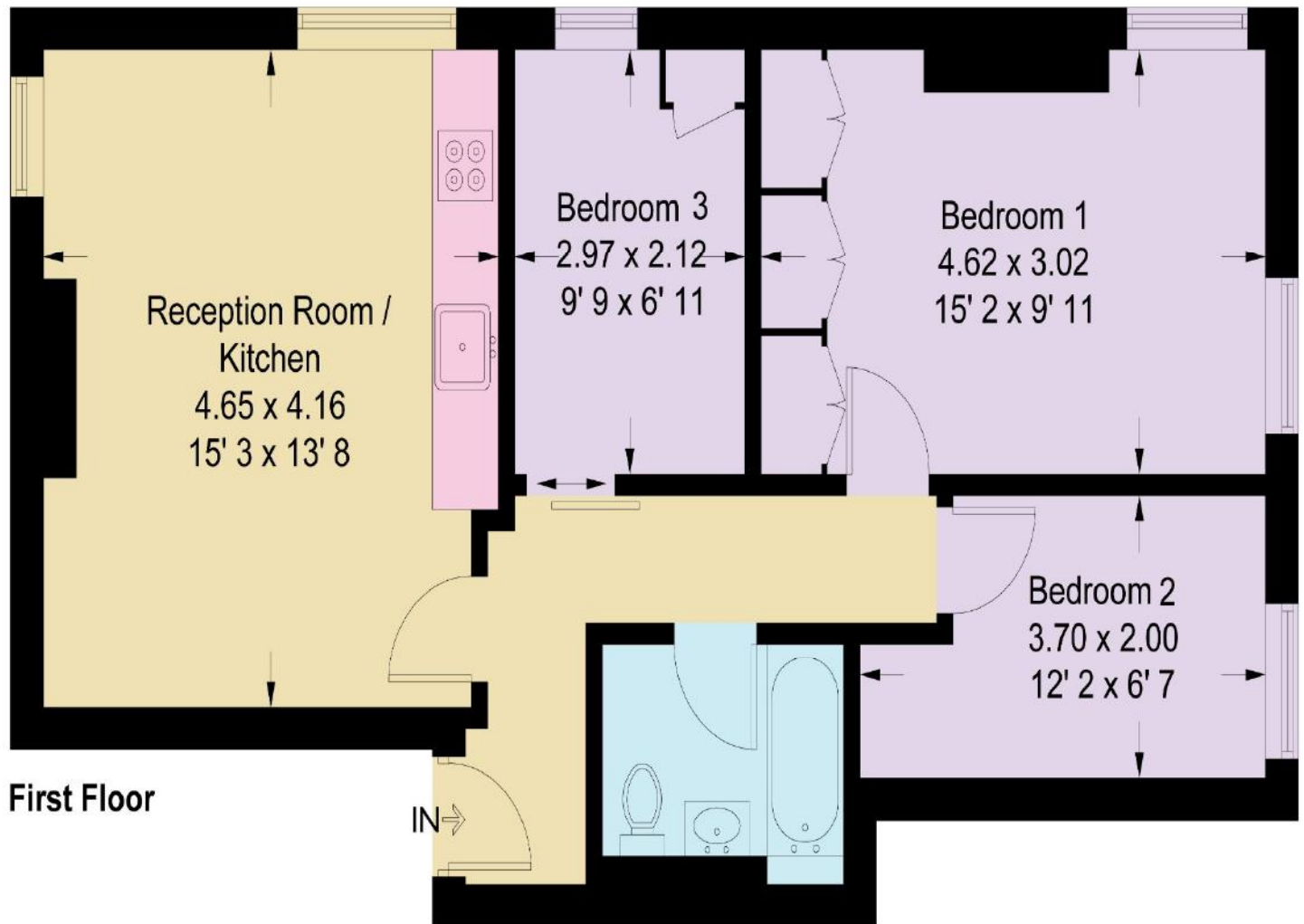
Communal Hallway



Communal Garden

North Grove

Approximate Gross Internal Area = 647 sq ft / 60.1 sq m



Not to scale, for guidance only and must not be relied upon as a statement of fact
All measurements and areas are approximate only and have been prepared in
accordance with the current edition of the RICS Code of Measuring Practice