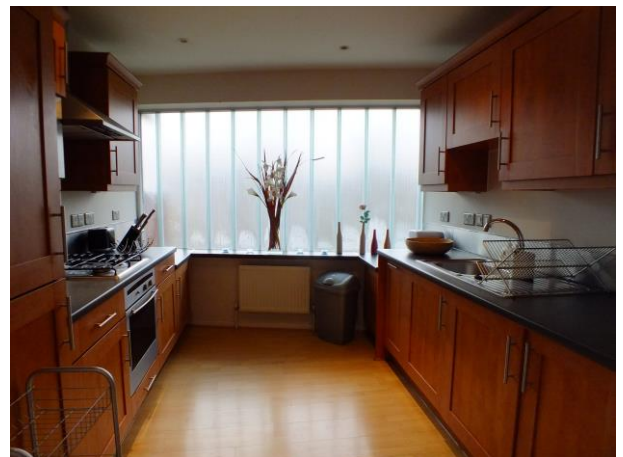


FLAT TO LET



- Large Private Terrace
- Off Street Parking
- A range of local amenities

Stylish, spacious two bedroom apartment with large private terrace, ideal for entertaining, with commanding views over local aspects, on the top floor of purpose built development at the junction with Melford Road opposite the very welcoming 'Barcelona' tapas bar. The development is characterised by a wedge shaped appearance at one end, white rendered elevations with intermittent glazed block screens and a series of projecting solid balconies to individual apartments at each level. Property comprises a lounge, two bedrooms (one with en-suite facilities), spacious fitted kitchen, huge bathroom, and a large private terrace. The property benefits from gas central heating, double glazing, video entry security system, off street parking and is ideally placed to benefit from a range of local amenities.



£1500 Monthly rental
Lordship Lane, Dulwich, SE22 8JY