



View of block





**£220,000**

Located in the sought-after area of Willen Park in north-east Milton Keynes and close to Willen Lake, is this two bedroom second floor apartment, offered to the market with no upper chain. The accommodation comprises a hallway, open-plan lounge/kitchen/diner, two bedrooms, a family bathroom, and an accompanying en-suite to the main bedroom. The property also boasts an allocated parking space to the rear of the building.

# Property Description

## COMMUNAL ENTRANCE

Entry via secure intercom, stairs rising to all floors, door to allocated parking.

## ENTRANCE

Door to:

## HALLWAY

Doors to all rooms, storage cupboard housing wall-mounted boiler, telephone for secure intercom entry, LVT flooring, radiator.

## LOUNGE/DINING AREA

Two double glazed windows to side aspect. Radiator, LVT flooring, television point, telephone point.

## KITCHEN AREA

Double glazed window to side aspect. Fitted with a range of soft close base and eye level units with square edge work surface over, stainless steel sink unit with mixer tap over, integrated electric oven and four-ring gas hob with extractor hood over, space for washing machine, space for fridge freezer, splashback tiling, tiled floor.

## BEDROOM ONE

Double glazed window to side aspect. Door to en-suite, LVT flooring, radiator.

## EN-SUITE

Low level WC with push button flush, pedestal wash hand basin with mixer tap over, fully tiled corner shower unit with wall-mounted shower and rainfall shower head, splashback tiling, tiled floor, shaver point, extractor fan, heated towel rail.

## BEDROOM TWO

Double glazed window to side aspect. Radiator, LVT flooring.

## BATHROOM

Double glazed frosted window to side aspect. Low level WC with push button flush, wash hand basin set in vanity unit with mixer tap over, P-shaped bath with mixer tap, wall-mounted shower and rainfall shower head, heated towel rail, shaver point, LVT flooring, extractor fan, splashback tiling.

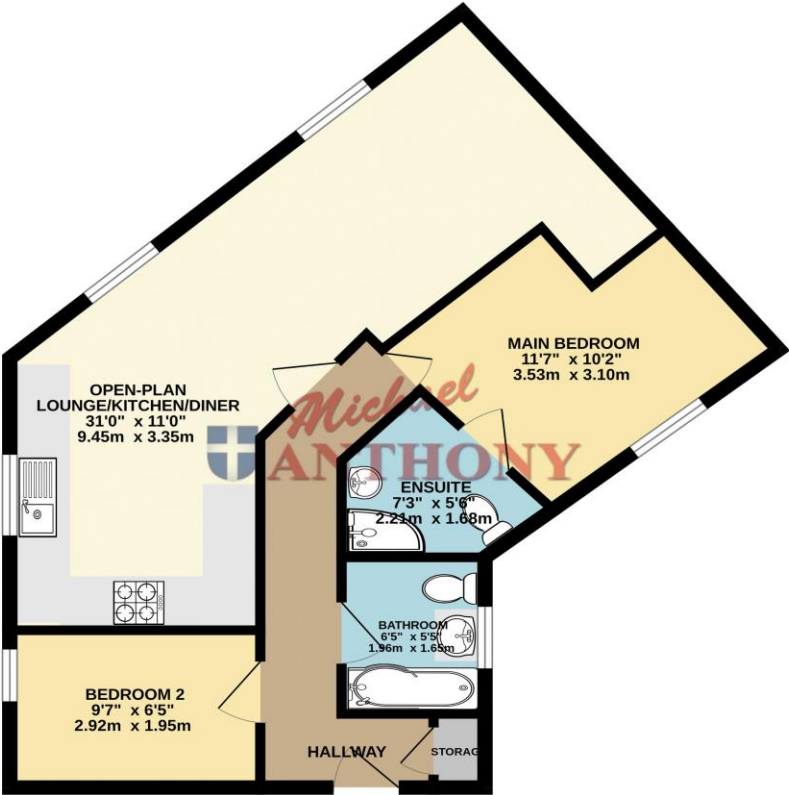
## OUTSIDE

## PARKING

One allocated parking space.

Bin store.

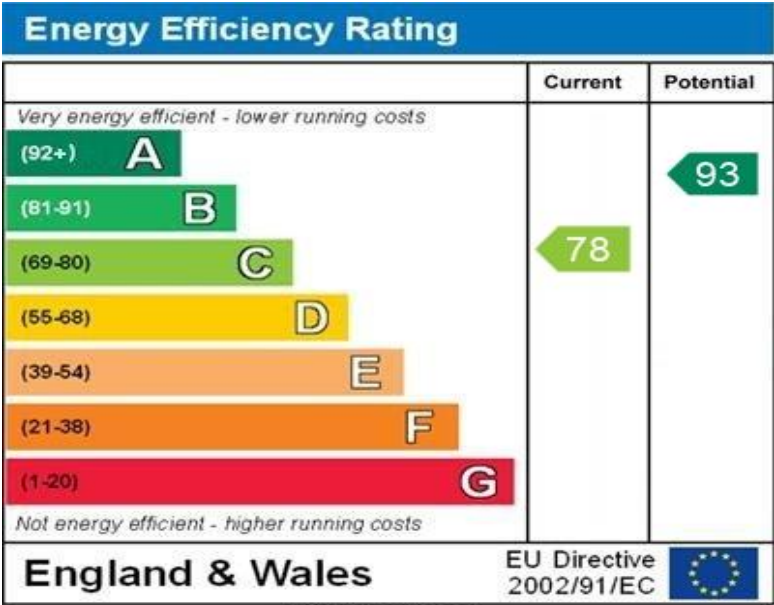
SECOND FLOOR  
571 sq.ft. (53.1 sq.m.) approx.



TOTAL FLOOR AREA : 571 sq.ft. (53.1 sq.m.) approx.  
Whilst every attempt has been made to ensure the accuracy of the floorplan contained here, measurements of doors, windows, rooms and any other items are approximate and no responsibility is taken for any error, omission or mis-statement. This plan is for illustrative purposes only and should be used as such by any prospective purchaser. The services, systems and appliances shown have not been tested and no guarantee as to their operability or efficiency can be given.  
Made with Metroplan ©2024

MONEY LAUNDERING REGULATIONS 2017 intending purchasers will be asked to produce identification and proof of financial status when an offer is received. We would ask for your co-operation in order that there will be no delay in agreeing the sale.

THE CONSUMER PROTECTION REGULATIONS 2008 The Agent has not tested any apparatus, equipment, fixtures and fittings or services and so cannot verify that they are in working order or fit for the purpose. A Buyer is advised to obtain verification from their Solicitor or Surveyor. References to the Tenure of a Property are based on information supplied by the Seller. The Agent has not had sight of the title documents. A Buyer is advised to obtain verification from their Solicitor. You are advised to check the availability of this property before travelling any distance to view. We have taken every precaution to ensure that these details are accurate and not misleading. If there is any point which is of particular importance to you, please contact us and we will provide any information you require. This is advisable, particularly if you intend to travel some distance to view the property. The mention of any appliances and services within these details does not imply that they are in full and efficient working order. These particulars are in draft form awaiting Vendors confirmation of their accuracy. These details must therefore be taken as a guide only and approved details should be requested from the agents



WWW.EPC4U.COM

209A Witan Gate Sovereign Court Milton Keynes Buckinghamshire MK9 2HP  
01908 393 553 | miltonkeynes@maea.co.uk